



# Greater Cleveland Regional Transit Authority Ridership Report – November 2021

## Summary

- The COVID-19 pandemic continued to affect ridership
- System ridership in November 2021 was 1.5 million, representing 31% more riders than in November 2020
  - Average fixed route weekday was 29% higher<sup>1</sup>
  - Average fixed route Saturday was 13% higher<sup>1</sup>
  - Average fixed route Sunday was 14% higher<sup>1</sup>



### Motorbus (MB)

Motorbus ridership in November 2021 was 31% higher than in November 2020

- Average weekday was 30% higher<sup>1</sup>
- Average Saturday was 7% higher<sup>1</sup>
- Average Sunday was 9% higher<sup>1</sup>



### Red Line (HR)

Red Line ridership in November 2021 was 37% higher than in November 2020

- Average weekday was 29% higher<sup>1</sup>
- Average Saturday was 44% higher<sup>1</sup>
- Average Sunday was 42% higher<sup>1</sup>



### Light Rail (LR)

Light Rail ridership in November 2021 was 22% higher than in November 2020

- Average weekday was 22% higher<sup>1</sup>
- Average Saturday was 1% lower<sup>1</sup>
- Average Sunday was 5% higher<sup>1</sup>



### HealthLine (RB)

HealthLine ridership in November 2021 was 23% higher than in November 2020

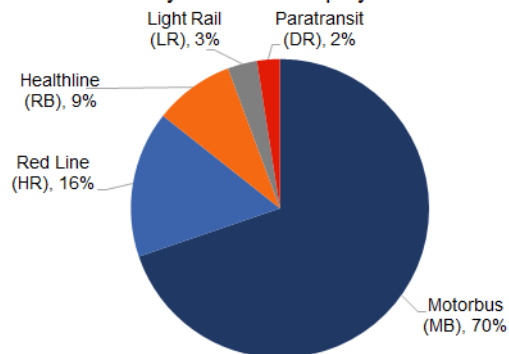
- Average weekday was 24% higher<sup>1</sup>
- Average Saturday was 3% higher<sup>1</sup>
- Average Sunday was 5% lower<sup>1</sup>



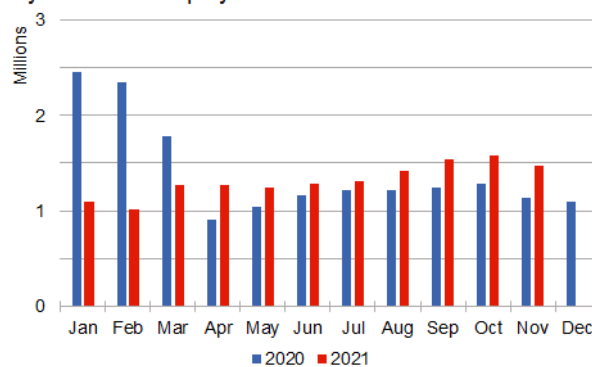
### Paratransit (DR)

Paratransit ridership in November 2021 was 35% higher than in November 2020

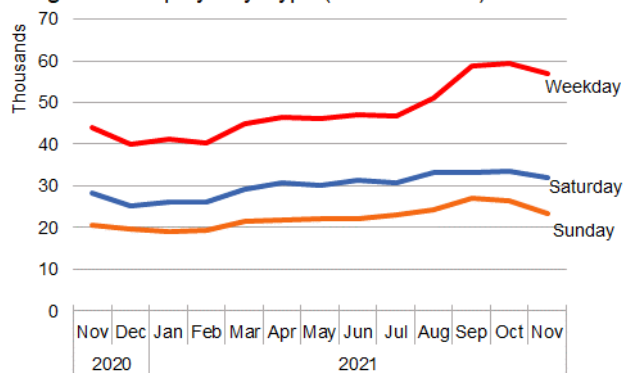
November 2021 System Ridership by Mode



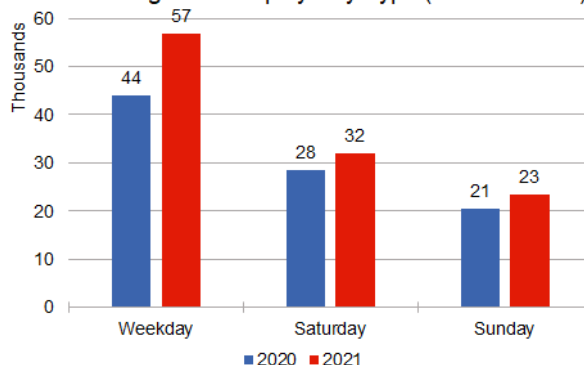
System Ridership by Month



Avg. Ridership by Day Type (no Paratransit)



November Avg. Ridership by Day Type (no Paratransit)



<sup>1</sup> Average ridership by day type does not include atypical days as defined by the FTA for NTD ridership reporting