

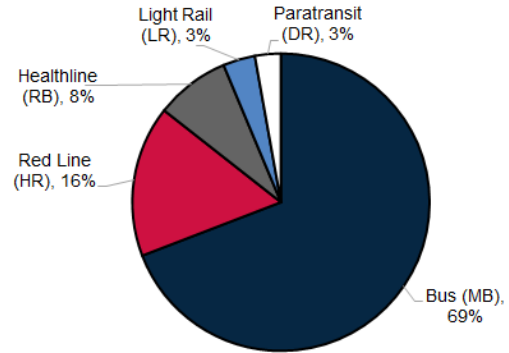


Greater Cleveland Regional Transit Authority Ridership Report – March 2022

Summary

- The COVID-19 pandemic continued to affect ridership
- System ridership in March 2022 was 1.6 million, representing 25% more riders than in March 2021
 - Average fixed route weekday was 26% higher¹
 - Average fixed route Saturday was 7% higher¹
 - Average fixed route Sunday was 16% higher¹
- St. Patrick’s Day fit the FTA definition of an “atypical service day”. That day’s ridership is excluded from average day-type comparisons, but is included in total ridership.

March 2022 System Ridership by Mode



Bus (MB)

Bus ridership in March 2022 was 25% higher than in March 2021

- Average weekday was 28% higher¹
- Average Saturday was 3% higher¹
- Average Sunday was 17% higher¹



Red Line (HR)

Red Line ridership in March 2022 was 33% higher than in March 2021

- Average weekday was 29% higher¹
- Average Saturday was 26% higher¹
- Average Sunday was 24% higher¹



Light Rail (LR)

Light Rail ridership in March 2022 was 23% higher than in March 2021

- Average weekday was 18% higher¹
- Average Saturday was 5% lower¹
- Average Sunday was 9% higher¹



HealthLine (RB)

HealthLine ridership in March 2022 was 8% higher than in March 2021

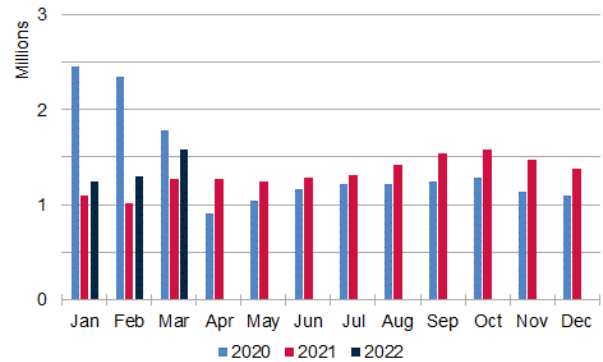
- Average weekday was 9% higher¹
- Average Saturday was <1% lower¹
- Average Sunday was 3% lower¹



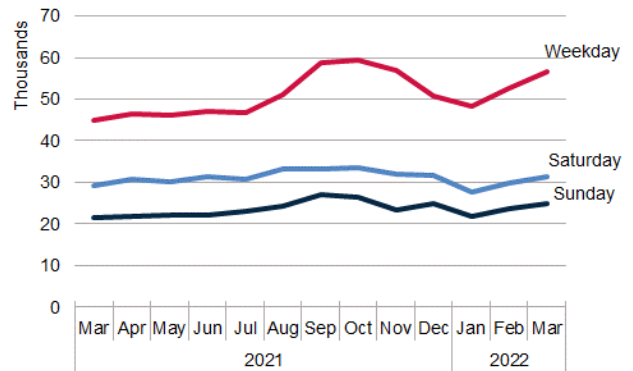
Paratransit (DR)

Paratransit ridership in March 2022 was 35% higher than in March 2021

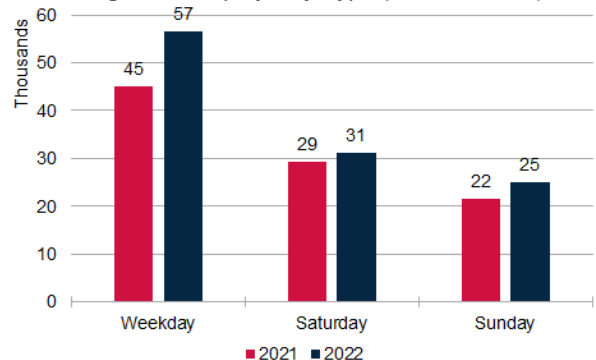
System Ridership by Month



Avg. Ridership by Day Type (no Paratransit)



March Avg. Ridership by Day Type (no Paratransit)



¹ Average ridership by day type does not include atypical days as defined by the FTA for NTD ridership reporting