

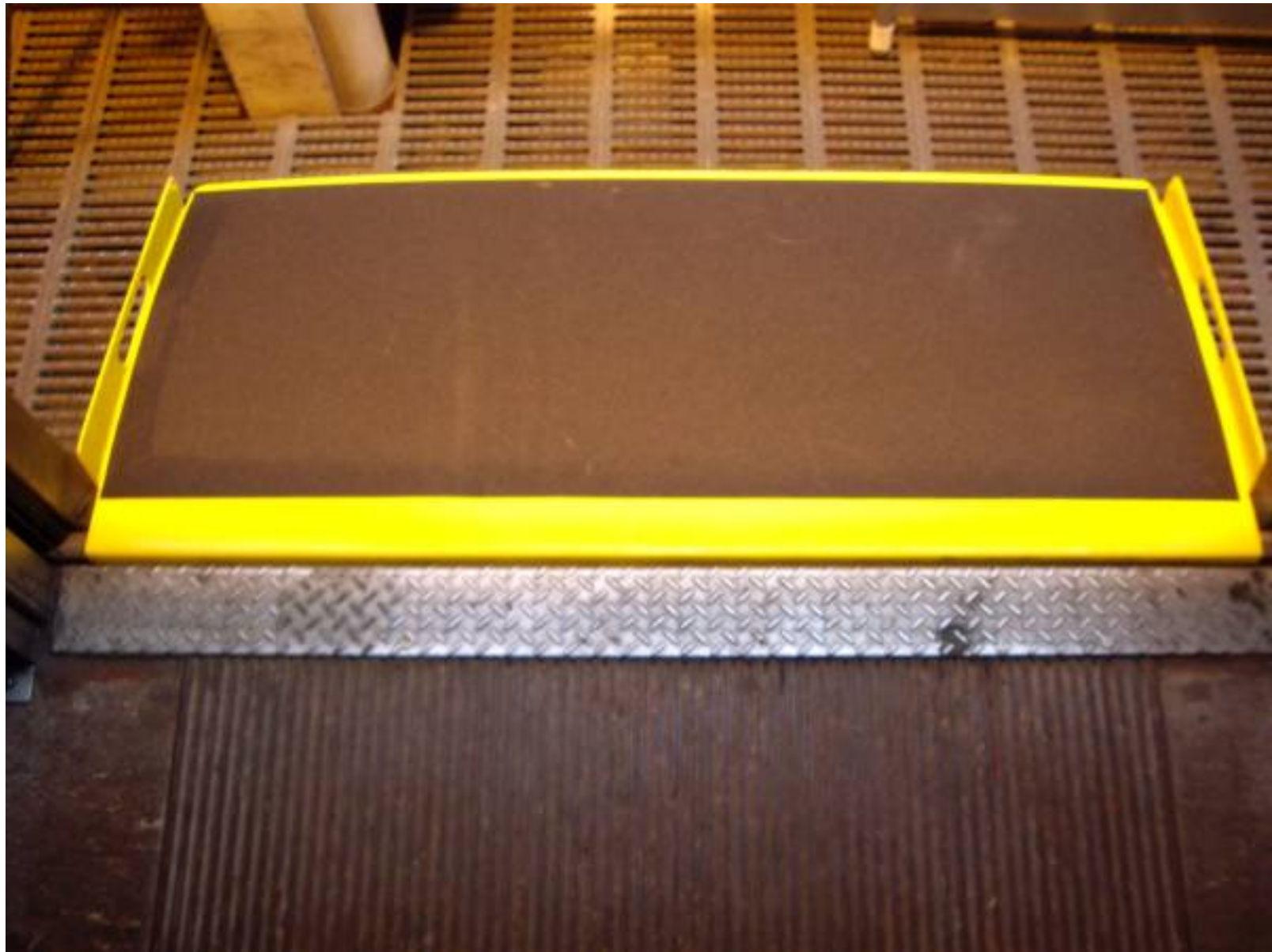
**RTA Red Line bridge plate
(for temporary use at stations with height and gap issues)**



**RTA Red Line bridge plate
(for temporary use at stations with height and gap issues)**



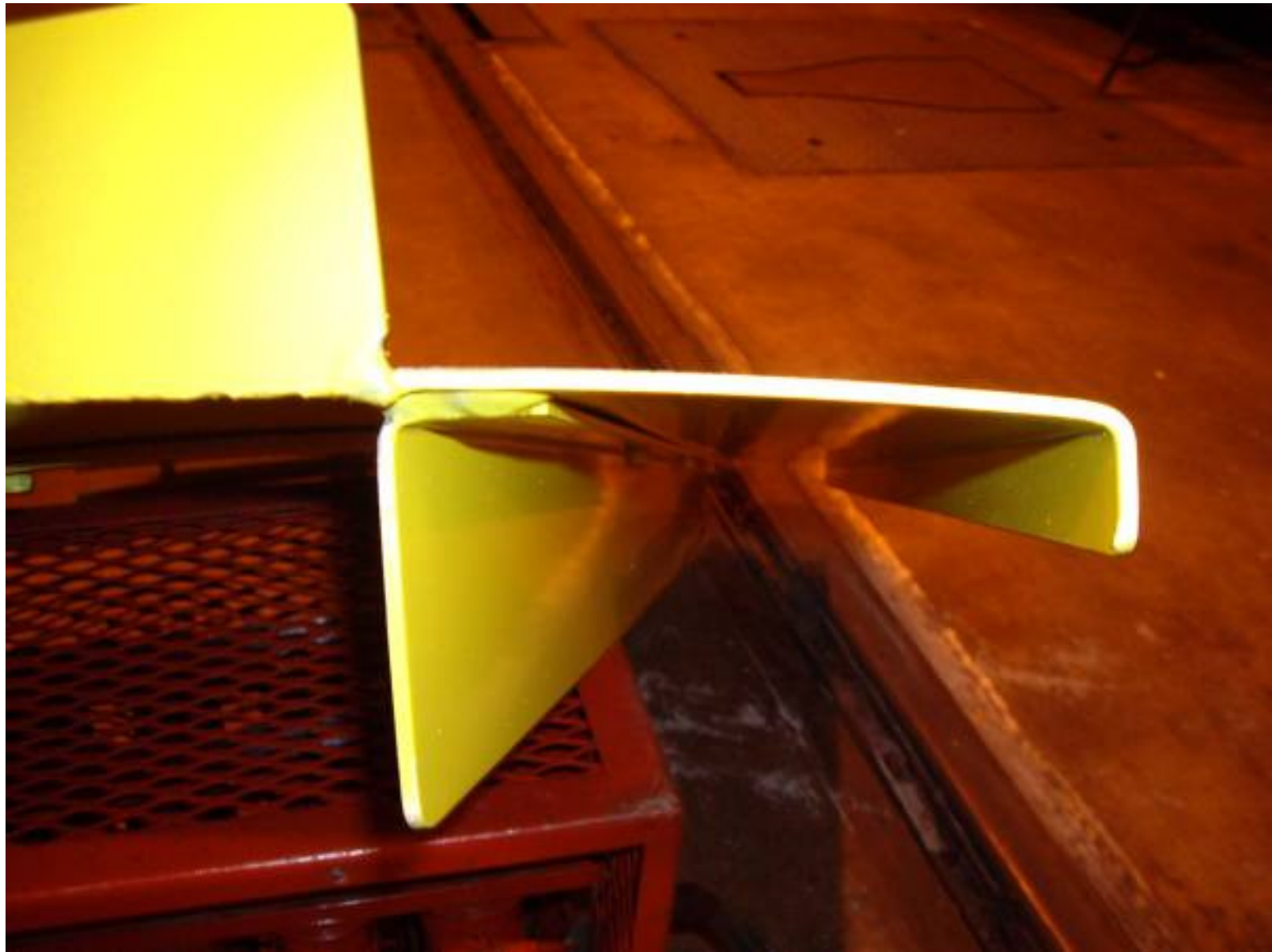
**RTA Red Line bridge plate
(for temporary use at stations with height and gap issues)**



**RTA Red Line bridge plate
(for temporary use at stations with height and gap issues)**



**RTA Red Line bridge plate
(for temporary use at stations with height and gap issues)**



**RTA Red Line bridge plate
(for temporary use at stations with height and gap issues)**



**RTA Red Line bridge plate
(for temporary use at stations with height and gap issues)**

