

Safety Bulletin



To: Hayden and Triskett
All Bus Operators

SUBJECT: High Alert Intersection: Lee and North Park – Bike Lanes end and Bicycles Merge with Traffic.

At Lee and North Park traveling southbound and eastbound the bike lanes permanently end and bicyclists must merge into regular traffic. Operators on the #37 and #40 routes should be aware of any bicyclists beside them or near them at this location so that six (6) feet of safe distance is provided to the bicyclists. The bus may need to vacate the curb lane if oncoming traffic is clear to allow the designated distance of six (6) feet.

If you are behind the bicyclist at the far side of this intersection and want to pass, as an Operator you must do the following:

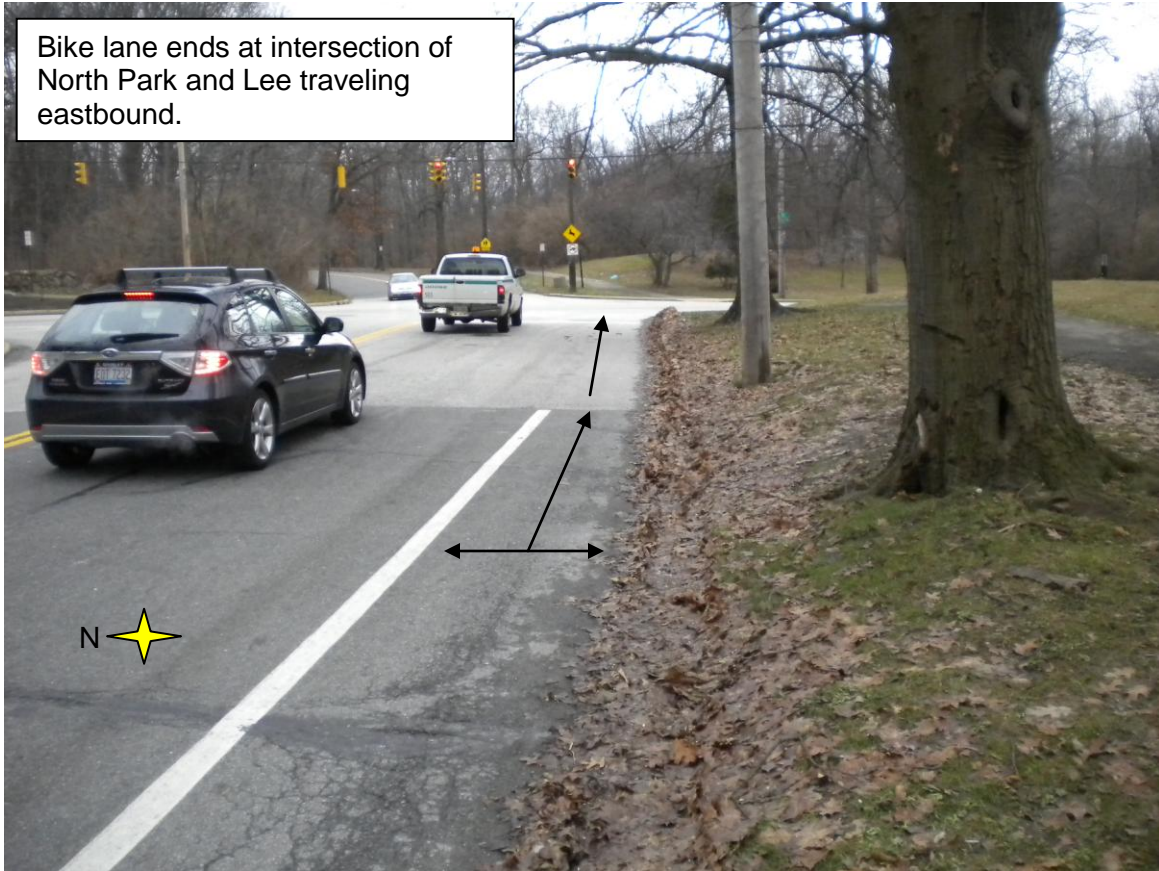
- Signal audibly to the bicycle being overtaken.
- Leave a safe distance, but not less than six (6) feet, and
- Vacate the lane in which the bicycle user is located when you pass, unless you can pass with a safe distance not less than six (6) feet.
- Maintain that distance until safely past the overtaken bicycle.



Safety Bulletin



Bike lane ends at intersection of North Park and Lee traveling eastbound.



Pamela McCombe

Pamela McCombe
Director of Safety

cc: S. Benford, M. York, B. Hampton, M. Schipper, F. Caver, O. Draper, K. Vest, A. Erenrich, T. Richardson, S. Sharp, G. Fields, S. Strack, C. Eaton, R. Chapman, N. Cummings.



Greater Cleveland Regional Transit Authority
www.rideRTA.com

Safety Dept, Jan. 14, 2013
No. 13-06