

LITTLE ITALY – UNIVERSITY CIRCLE (MAYFIELD STATION)

COMMUNITY MEETING

FEBRUARY 21, 2013



LITTLE ITALY REDEVELOPMENT
CORPORATION



Environmental Assessment (EA) Availability

- Completed in Compliance with the **National Environmental Policy Act** (NEPA) of 1969
 - Requires all federal agencies to assess and determine if a proposed action will result in significant environmental impacts on the social and natural environment
- Environmental Assessment (EA)* has been prepared to evaluate any potential impacts the Rapid Transit Station may have on:
 - Socioeconomic
 - Natural
 - Physical Environment

**40 CFR § 1500, 23 CFR Part 771*

Sections 134& 135 USC as amended § 6001 SAFETEA-LU

UNIVERSITY CIRCLE – LITTLE ITALY (MAYFIELD STATION)

Environmental Assessment Document



Baker

Environmental Schedule

- July 31, 2012 – Public Meeting #1
- February 11, 2013 – Environmental Assessment (EA) Available
- February 21, 2013 – Public Meeting #2
- March 13, 2013 – Environmental Assessment Comment Period Ends
- April 2013 – Finding of No Significant Impact (FONSI) Expected

Environmental Assessment (EA) Availability

- GCRTA's Website
 - http://www.riderta.com/nu_notices-community.asp
- Local Sites:

Cleveland Public Library:

Main Branch

Martin Luther King Jr. Branch

Rice Branch

Glenville Branch

Langston Hughes Branch

Cuyahoga County Public Library:

South Euclid-Lyndhurst Branch

Warrensville Heights Branch

Case Western Reserve University:

Kelvin Smith Library

Cleveland State University:

Michael Schwartz Library

University Circle Incorporated

Alta House

UNIVERSITY CIRCLE – LITTLE ITALY (MAYFIELD STATION)

Environmental Assessment Document

Environmental Assessment (EA) Availability

- Comments regarding this Environmental Assessment (EA) can be submitted by **March 13, 2013** to:

***Valerie Webb, Planning Team Leader,
Greater Cleveland Regional Transit Authority
Programming and Planning Department
1240 West Sixth Street
Cleveland, Ohio 44113
216.566.5260
VWEBB@gcrta.org***

UNIVERSITY CIRCLE – LITTLE ITALY (MAYFIELD STATION)

Environmental Assessment Document



Findings of Environmental Assessment (EA)

Resources with No Effect/Impact determined on:

- Land Use and Zoning
- Air Quality
- Traffic
- Archaeological Resources
- Socioeconomic and Environmental Justice
- Parks and Recreation
- Noise and Vibration
- Wetlands
- Floodplains
- Water Quality and Resources
- Ecological Areas and Threatened / Endangered (T&E) Species
- Indirect and Cumulative Impacts

UNIVERSITY CIRCLE – LITTLE ITALY (MAYFIELD STATION)

Environmental Assessment (EA)



Baker

Findings of Environmental Assessment (EA)

- **Resources with Limited Effect/Impact** determined on:
 - Cultural Resources/Section 106
 - Property Acquisitions
 - Hazardous Materials
 - Temporary Construction Activity

Cultural Resources

- Completed in compliance with Section 106, as Amended, and 36 CFR Part 800
- FTA Developed the Area of Potential Effect (APE) in Consultation with Ohio Historic Preservation Office (OHPO)
- Evaluated any Potential Effects of the Project on Historic Properties & Resources Over 50 Years of Age

Cultural Resources

- Coordination with Local Agencies and Consulting Parties
 - **Little Italy Redevelopment Corporation**
 - **Cleveland Landmarks Commission**
 - **Cleveland Institute of Art**
 - University Circle, Inc.
 - Case Western Reserve University
 - Holy Rosary Church
- Coordination with OHPO
 - 3 meetings with OHPO
 - OHPO Concurrence with FTA Findings on November 12, 2012
- Local Design Review Approval
 - Little Italy Redevelopment Corporation's Design Review Board – September 25, 2012
 - Cleveland Landmarks Commission Design Review – September 27, 2012

Based on the Phase I Cultural Resource Survey Report, FTA made the determination that the proposed project will result in a finding of ***No Historic Properties Affected*** for archaeological resources and a finding of ***No Adverse Effect*** for history/architecture resources.



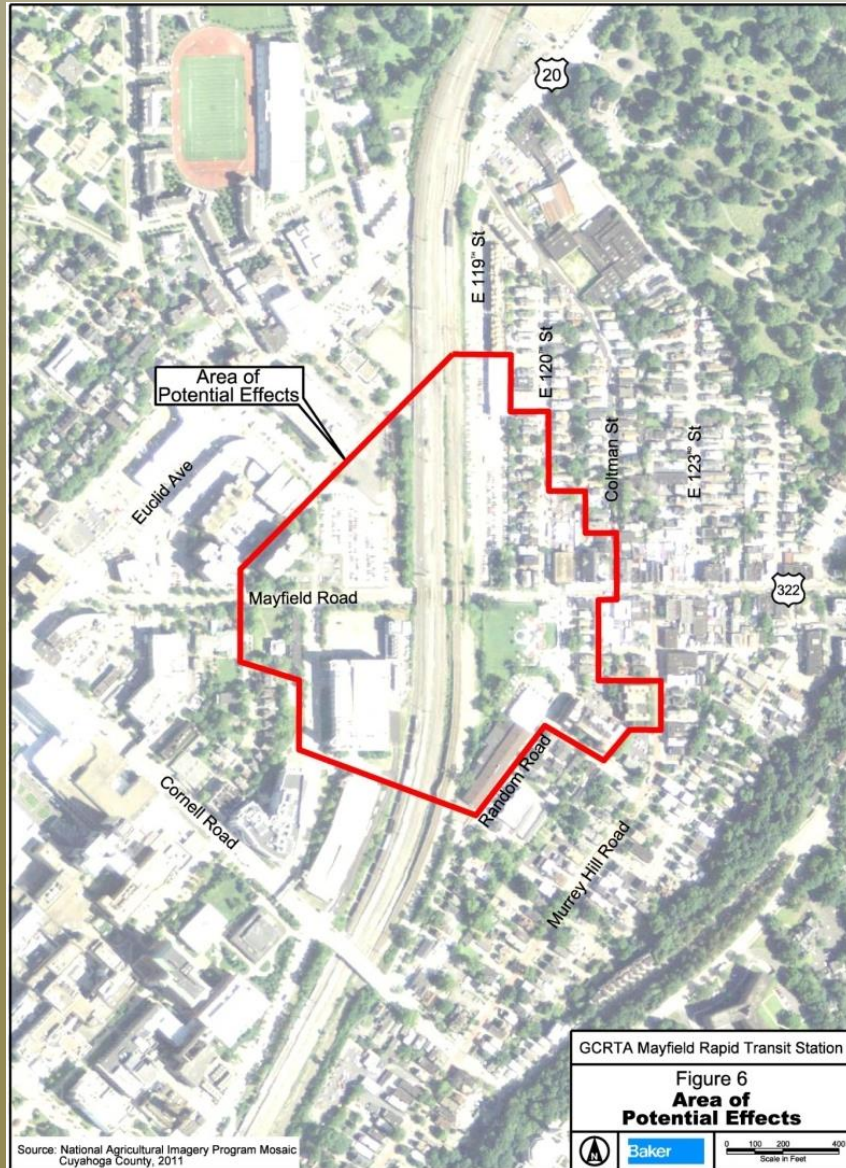
UNIVERSITY CIRCLE – LITTLE ITALY (MAYFIELD STATION)

Cultural Resources Analysis Finding



Baker

History/Architecture



Archaeology



UNIVERSITY CIRCLE – LITTLE ITALY (MAYFIELD STATION)

Area of Potential Effects (APE)

Cultural Resources

- 3 Individually Listed NRHP Resources
 - Justus L. Cozad-Bates House
 - Holy Rosary Church
 - Murray Hill School
- 3 Cleveland Historic Landmarks
 - Justus L. Cozad-Bates House
 - Holy Rosary Church
 - Murray Hill School
- Little Italy Local Cleveland Historic Landmark District
- No Archaeological Sites

UNIVERSITY CIRCLE – LITTLE ITALY (MAYFIELD STATION)

Cultural Resources Inventory

Property Acquisition

Permanent

- Approximately 0.45 acres of vacant former railroad property that borders the GCRTA tracks to the east

Temporary – for constructed related activities

- Approximately 3.47 acres that border both sides of the GCRTA tracks

No Relocations or Displacements

UNIVERSITY CIRCLE – LITTLE ITALY (MAYFIELD STATION)

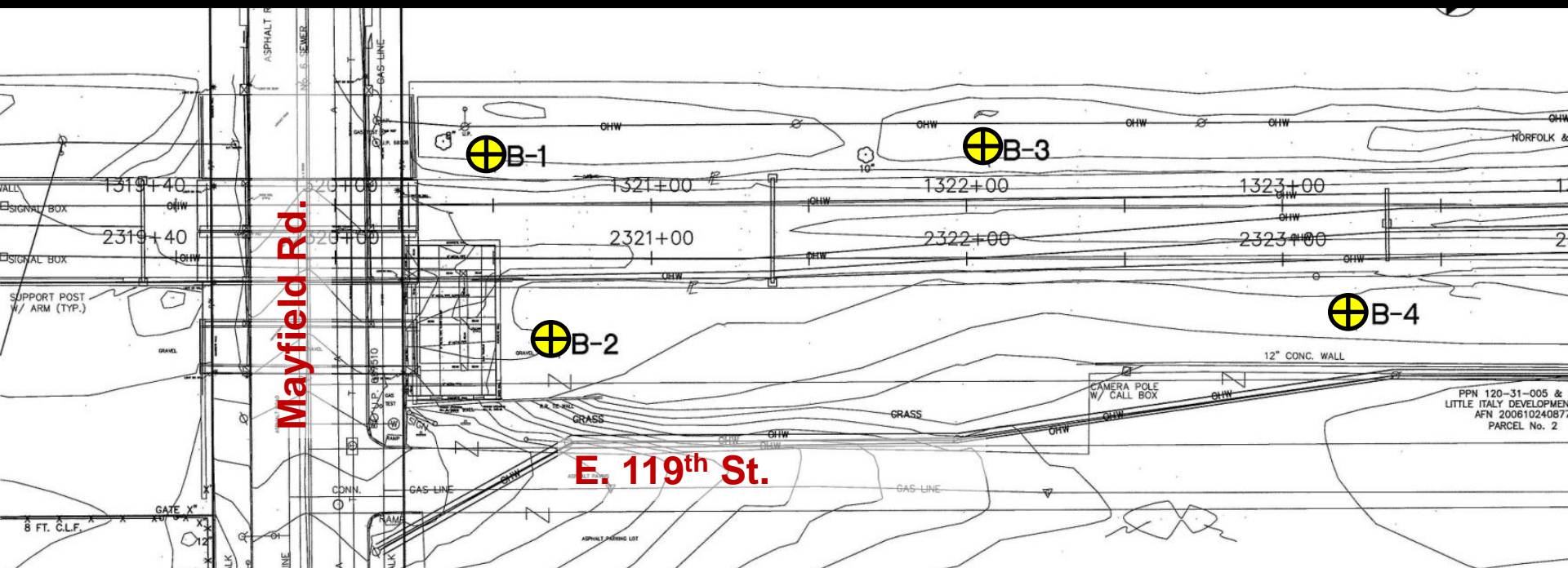
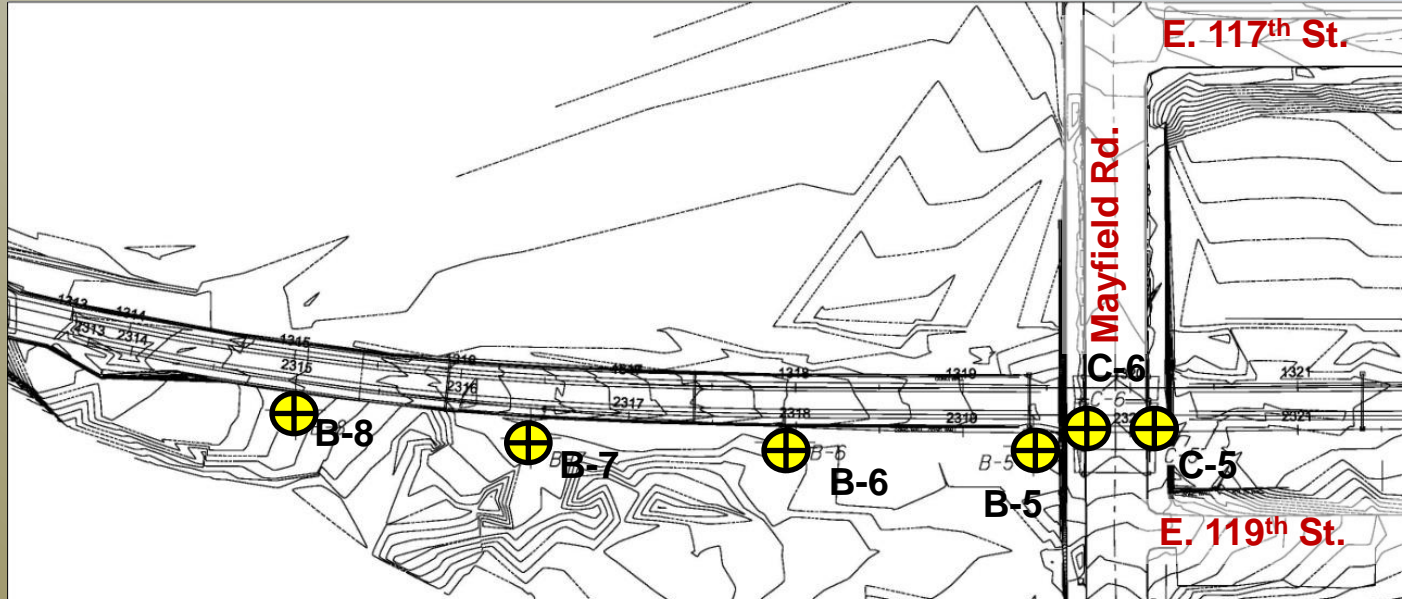
Property Acquisition

Hazardous Materials

- Phase I Environmental Site Assessment (ESA) in 2009 and 2012
- Limited Phase II ESA in 2009 and 2012
- Investigations determined that the arsenic and benzo(a)pyrene levels identified within the construction area ***do not exceed the commercial/industrial and construction/excavation direct soil standard***
 - Arsenic levels range from 2.99 - 9.12 mg/kg < 82 mg/kg
 - Benzo(a)pyrene levels range from 0.00 - 1.90 mg/kg < 7.70 mg/kg
- Managed through appropriate health and safety, dust, erosion, and soil management protocols

UNIVERSITY CIRCLE – LITTLE ITALY (MAYFIELD STATION)

Environmental Site Assessments (ESA) for hazardous materials and/or waste



UNIVERSITY CIRCLE – LITTLE ITALY (MAYFIELD STATION)

ESA Investigations



Baker

Temporary Construction Activities

- Auditory
 - Temporary and Short Term from Construction Activities
 - Construction Equipment
- Equipment Air Quality
 - Construction Equipment Exhaust
- Road and Lane Closures
 - Temporary Closure of Mayfield Road
 - Maximum 1 Week During Bridge Relocation
 - Periodic Temporary Lane Closures
- Grading, Excavation and Construction of Earthen Berm
 - Sediment and Soil Erosion

UNIVERSITY CIRCLE – LITTLE ITALY (MAYFIELD STATION)

Construction Impacts

Project Impacts & Mitigation Measures

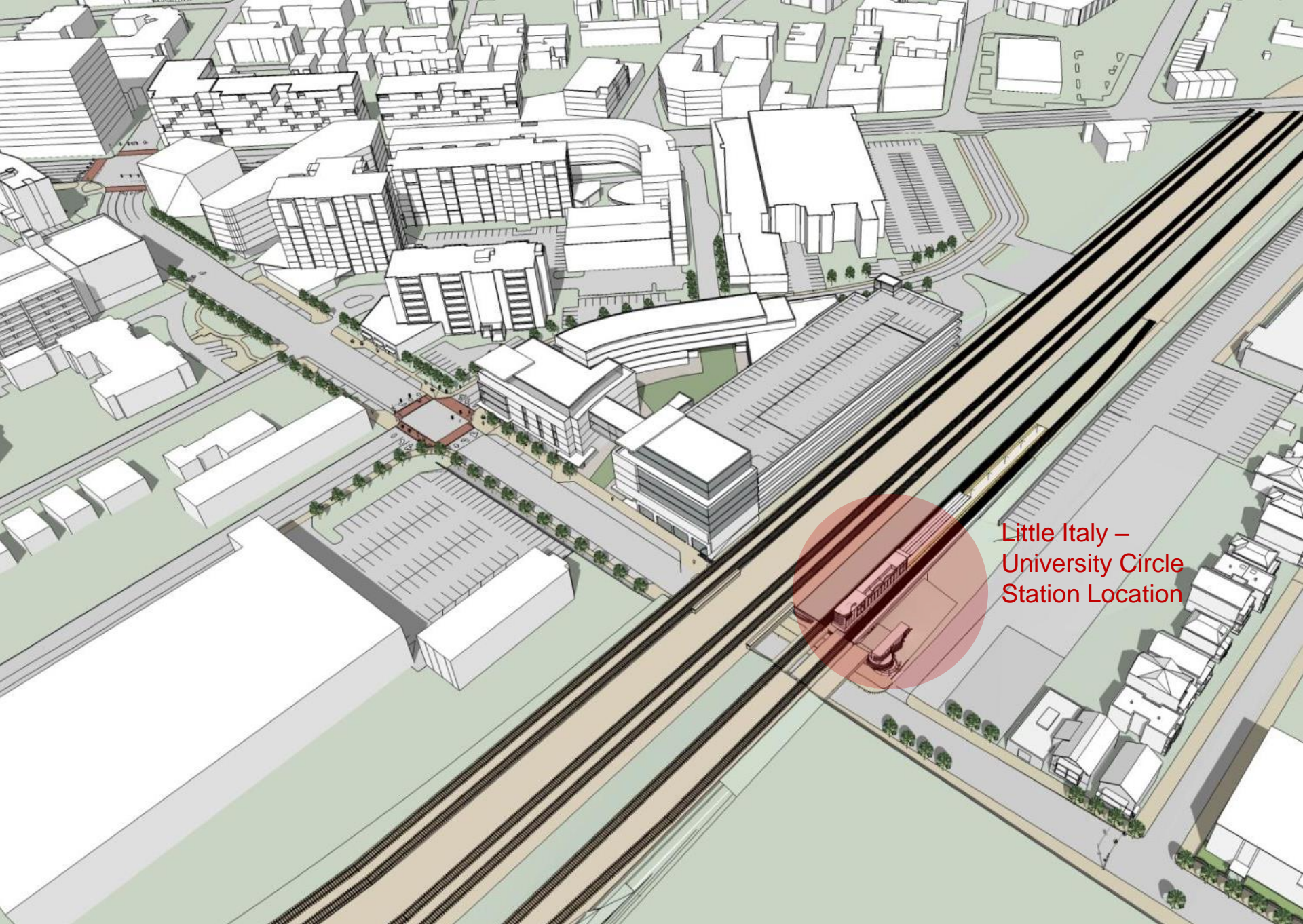
Resource	Mitigation
Cultural Resources	Little Italy and Cleveland Landmarks Design Review and Approval
Property Acquisition	Uniform Relocations Assistance Act
Hazardous Materials	Below Commercial and Construction Limits
Construction Activity:	
Auditory	No Blasting or Pile Driving; GCRTA Operational Parameters
Air Quality	Equipment meet Manufacture's Specs for Maintenance and Fuels
Road and Lane Closures	Detour Signs; 18 Day Notification to Agencies and Local Officials; Access to All Properties will be Maintained
Grading and Excavation	Follow Regulatory Agency Best Management Practices (BMP) and Maintain Control Measures

UNIVERSITY CIRCLE – LITTLE ITALY (MAYFIELD STATION)

Environmental Assessment Document



Station Relocation & Neighborhood Adjacency



Little Italy –
University Circle
Station Location

New Station Position Within The Emerging Neighborhood Context



LITTLE ITALY - UNIVERSITY CIRCLE (MAYFIELD STATION)

Existing Vault

February 21, 2013

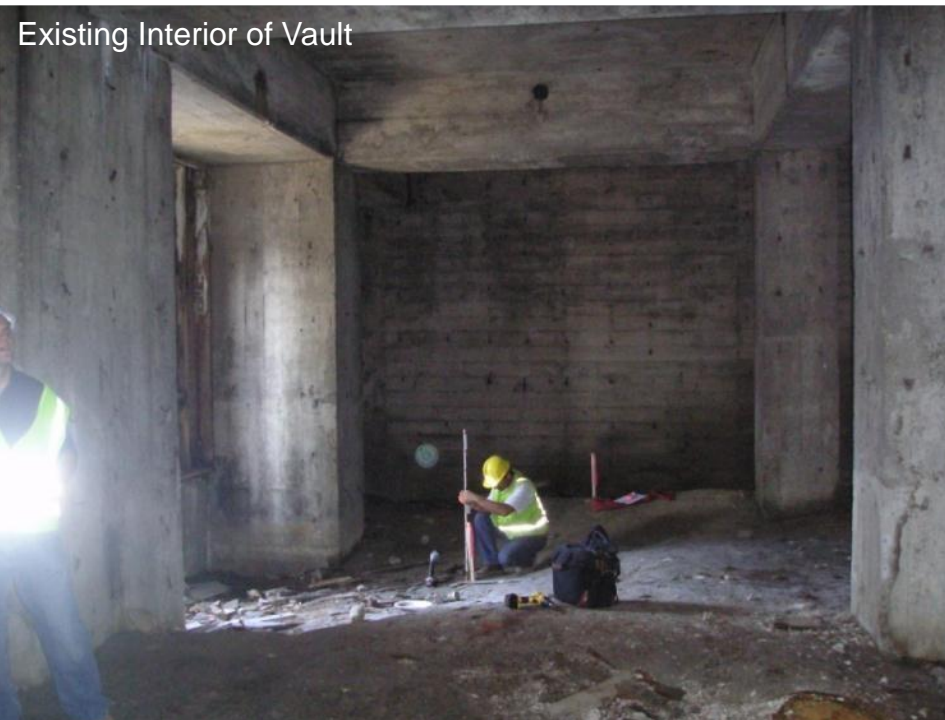
Existing Sidewalk Under Bridges



Existing Sidewalk & Boarded-up Vault



Existing Interior of Vault



Existing Interior of Vault





LITTLE ITALY - UNIVERSITY CIRCLE (MAYFIELD STATION)

RTA Eastbound Bridge Existing Location

February 21, 2013



LITTLE ITALY - UNIVERSITY CIRCLE (MAYFIELD STATION)

Relocated RTA Eastbound Bridge and New Station Entrance

February 21, 2013



Existing Vault & Bridges Along Mayfield Road





New Little Italy – University Circle Transit Station at Mayfield Road





New Little Italy – University Circle Transit Station at Night



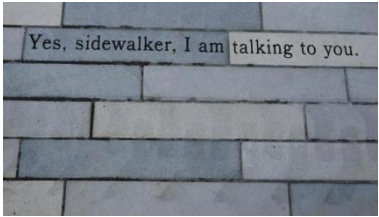
University Circle-Little Italy RTA Station Public Art



Public Art Components



Suspended entrance installation
(local or national artist)



Seating text/poetry
(local writer)



Bike rack
(local artist)



Artist designed terrazzo floor
(local artist)

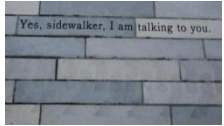


Artistic Lighting Environment
(national artist)

Timeline



Suspended entrance installation Finalists selected March 2013
Artist selected May 2013
Final design completed summer 2013



Seating text/poetry Finalists selected
Work selected March 2013



Bike rack Artist selected spring 2013



Artist designed terrazzo floor Work in progress



Artistic Lighting Environment Work in progress



Suspended Entrance Installation



Artwork Design Direction:

Animate an opening in the architecture

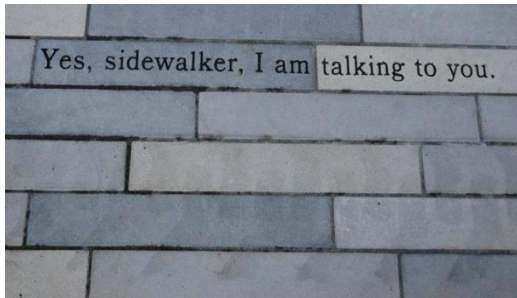
Welcome users into the station

Create a sense of arrival into the "RTA Space"

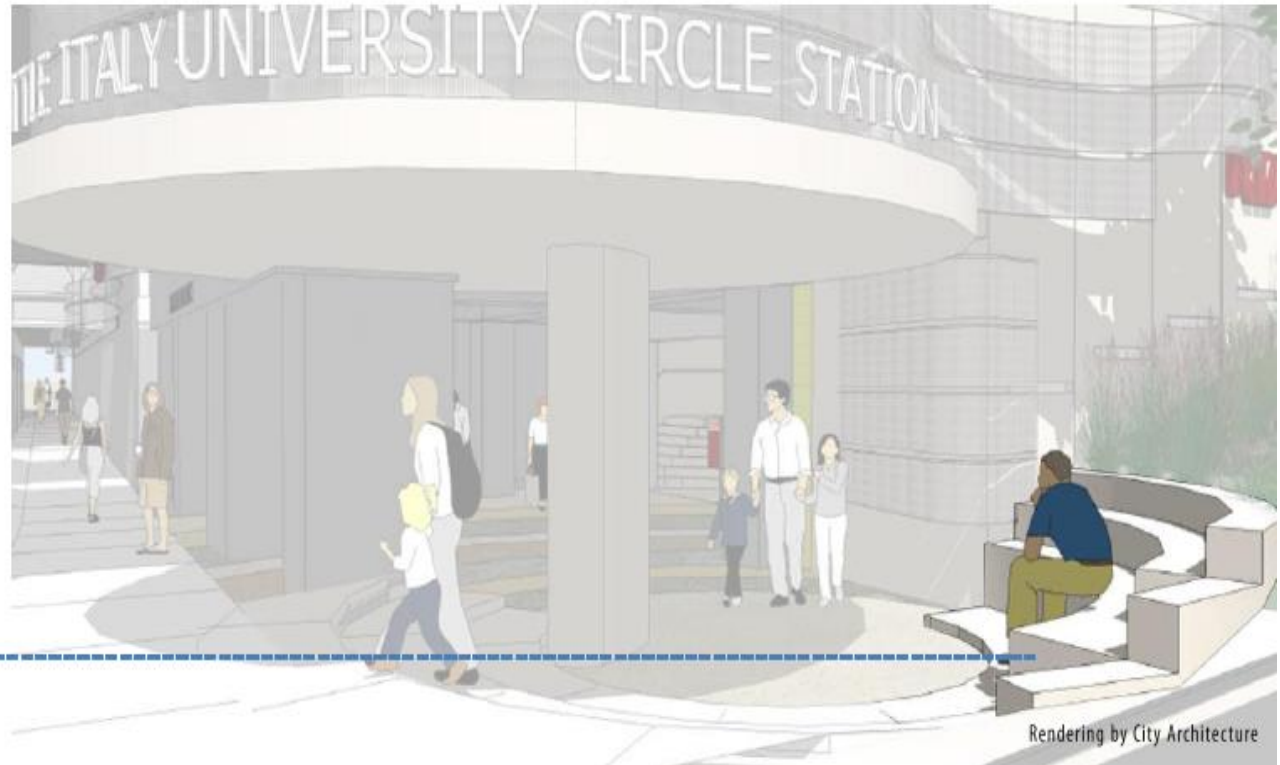


Inspiration images: "Letting Go" by Hottea, also known as Eric Rieger, from <http://www.mutantspace.com/hottea-letting-go-art-installation/>

Seating text/poetry



Possible location:
Step seating area at
main entrance



Rendering by City Architecture

Bike Rack



Artwork Design Direction:

Provide an amenity that responds to the surrounding neighborhoods & architecture and that draws users from the streetscapes into the station
Create an artwork that is both aesthetically pleasing and functional
Weave together the pedestrian pathways under the bridge and throughout the station



INSPIRATION IMAGES



Artist Designed Terrazzo Floor



Throughout first level and possibly on other surfaces, like stairwells or ceiling

Rendering by City Architecture



Artwork Design Direction:

- Draw users into the station & transition users from streetscape into the station space
- Create a directional “flow” to guide riders through the space
- Activate a transitional space in the building
- Create an intriguing experience up close and from a distance
- Opportunity may include floors and interior surfaces, like walls, stairwells, and ceilings



INSPIRATION IMAGES



Artistic Lighting Environment

Artist Leni Schwendinger of Light Projects developing concepts



Examples of Light Projects work

A nighttime architectural rendering of a transit station. The building features a prominent red 'RTA' logo on a curved, metallic-looking structure. To the left, a yellow-painted steel bridge or walkway with railings runs parallel to the building. The main building has a series of stacked, cylindrical or barrel-shaped architectural elements. A tall, modern street lamp stands on the right. The foreground shows a dark pavement with yellow-painted crosswalk markings. A semi-transparent text box is overlaid in the center.

Artistic Lighting Environment Design Direction:

Emphasize and embellish architecture while also celebrating a neglected, yet uniquely interesting infrastructural space.

Highlight the station as a center point — the hinge between each strongly identified place.

UNIVERSITY CIRCLE – LITTLE ITALY (MAYFIELD STATION)

QUESTIONS / COMMENTS

FEBRUARY 21, 2013



Baker



LITTLE ITALY REDEVELOPMENT
CORPORATION

