

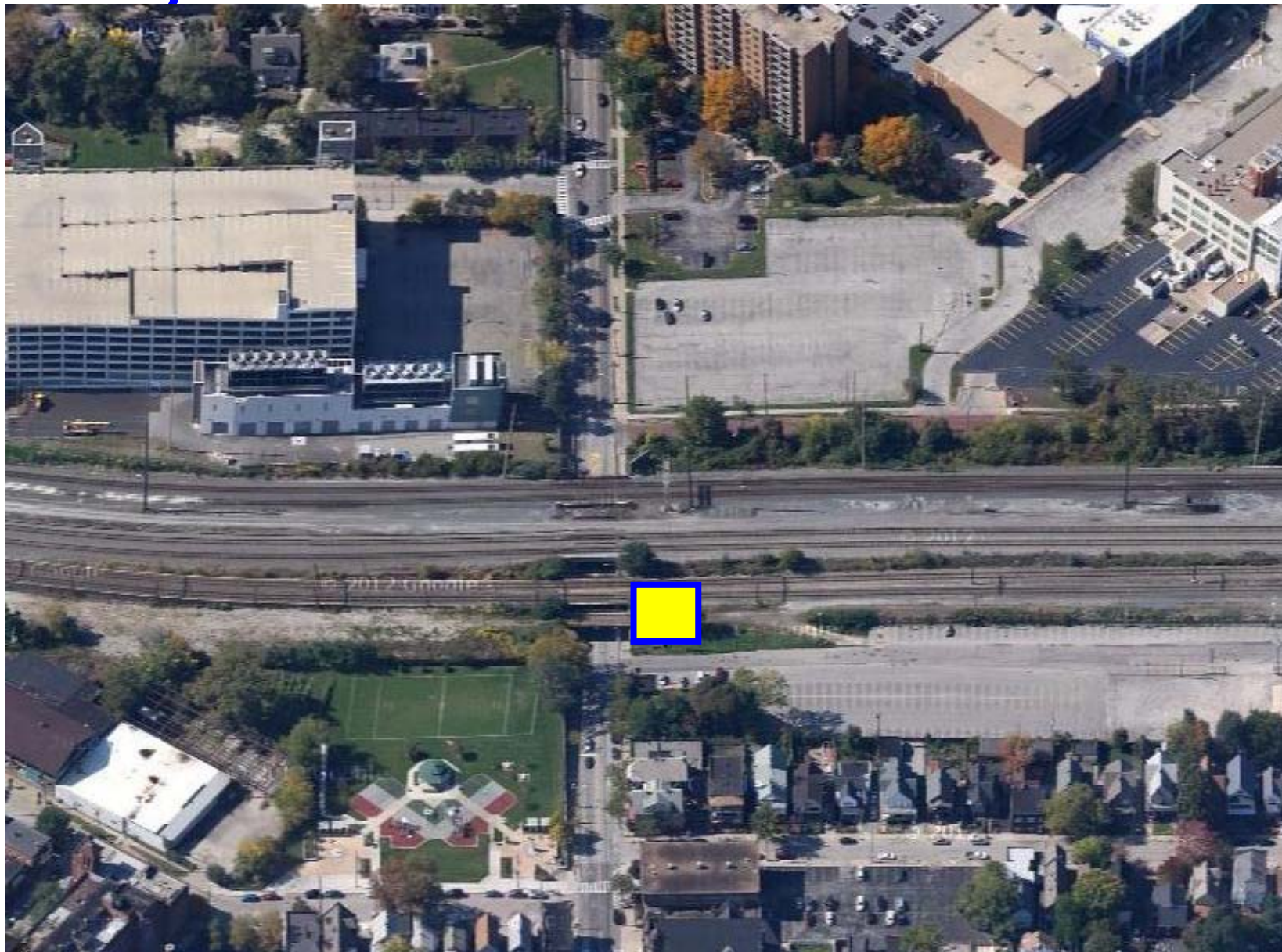


# Project 24P - Mayfield Station Design

Design Change Order  
City Architecture, Inc.

RTA Engineering & Project Development  
July 2, 2013

# Mayfield Pedestrian Enhancements





# Mayfield Pedestrian Enhancements



# Mayfield Pedestrian Enhancements





# Mayfield Pedestrian Enhancements



# Mayfield Pedestrian Enhancements



# Mayfield Pedestrian Enhancements





# Mayfield Pedestrian Enhancements

- \$800,000 NOACA grant received to improve pedestrian experience on Mayfield Road under CSX and NS railroad bridges
- City Architecture is uniquely suited to perform this design adjoining the new Little Italy Station project
- Approved by Change Committee
- 15% DBE Goal applies to this work





# Contract Summary

| Element                               | Cost               |
|---------------------------------------|--------------------|
| Original Contract                     | \$1,100,000        |
| Change Orders to Date (#1-6)          | <u>\$517,301</u>   |
| <b>Total to Date</b>                  | <b>\$1,617,301</b> |
| Proposed Change Order #7              | \$102,919          |
| Remaining General Manager's Authority | \$58,699           |



# Mayfield Pedestrian Enhancements

- Improvements between E. 117th and E. 120th:
  - New lighting, signage and design elements leading to station entrance
  - Repair drainage behind bridge abutment
  - Bridge painting and abutment repairs
  - Removal of abandoned utility poles



# Mayfield Pedestrian Enhancements

- Improvements between E. 117th and E. 120th continued:
  - New sidewalks and supporting walls
  - Pedestrian railing replacement
  - Landscaping at E. 117th corner
- Stand-alone construction contract so as not to delay station design and construction





# Recommendation

- Board Planning and Development Committee approve Change Order to City Architecture, Inc. at a cost not to exceed \$102,919 to design pedestrian enhancements on Mayfield Road adjoining the proposed Little Italy-University Circle Rail Station and re-establishing the General Manager's Change Order Authority.