

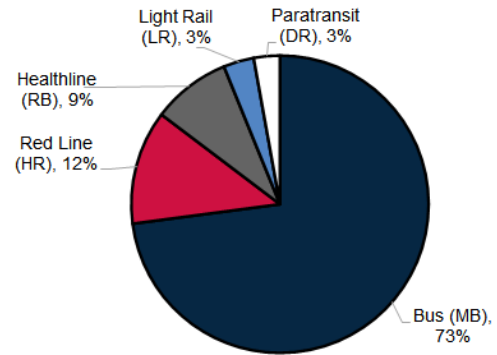


Greater Cleveland Regional Transit Authority Ridership Report – June 2022

Summary

- The COVID-19 pandemic continued to affect ridership
- System ridership in June 2022 was 1.5 million, representing 20% more riders than in June 2021
 - Average fixed route weekday was 20% higher¹
 - Average fixed route Saturday was 19% higher¹
 - Average fixed route Sunday was 27% higher¹
- Several rail shutdowns to support scheduled maintenance work during June 2022 affected total monthly ridership and averages for all day types

June 2022 System Ridership by Mode



Bus (MB)

Bus ridership in June 2022 was 26% higher than in June 2021

- Average weekday was 26% higher¹
- Average Saturday was 22% higher¹
- Average Sunday was 38% higher¹



Red Line (HR)

Red Line ridership in June 2022 was 1% lower than in June 2021

- Average weekday was 2% lower¹
- Average Saturday was 10% higher¹
- Average Sunday was 1% higher¹



Light Rail (LR)

Light Rail ridership in June 2022 was 2% higher than in June 2021

- Average weekday was 1% higher¹
- Average Saturday was 6% higher¹
- Average Sunday was 1% lower¹



HealthLine (RB)

HealthLine ridership in June 2022 was 18% higher than in June 2021

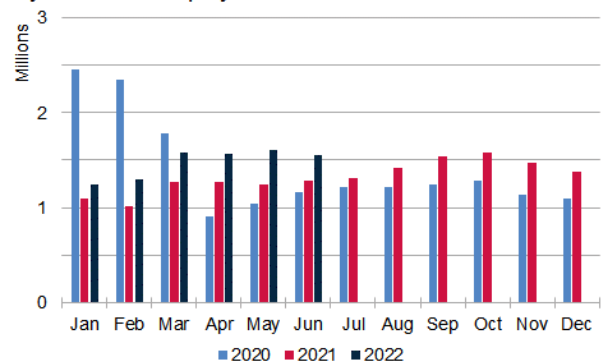
- Average weekday was 17% higher¹
- Average Saturday was 19% higher¹
- Average Sunday was 24% higher¹



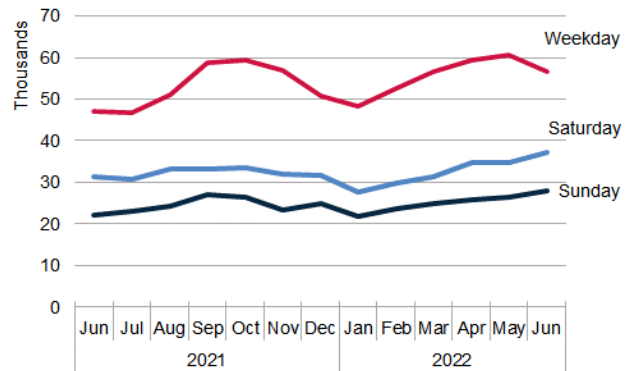
Paratransit (DR)

Paratransit ridership in June 2022 was 19% higher than in June 2021

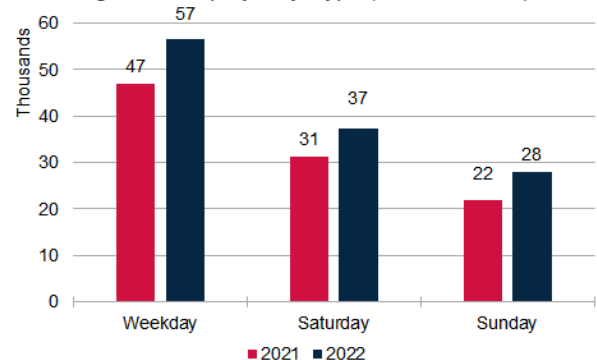
System Ridership by Month



Avg. Ridership by Day Type (no Paratransit)



June Avg. Ridership by Day Type (no Paratransit)



¹ Average ridership by day type does not include atypical days as defined by the FTA for NTD ridership reporting