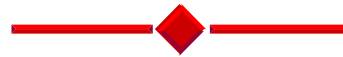




Safety and Security Meeting

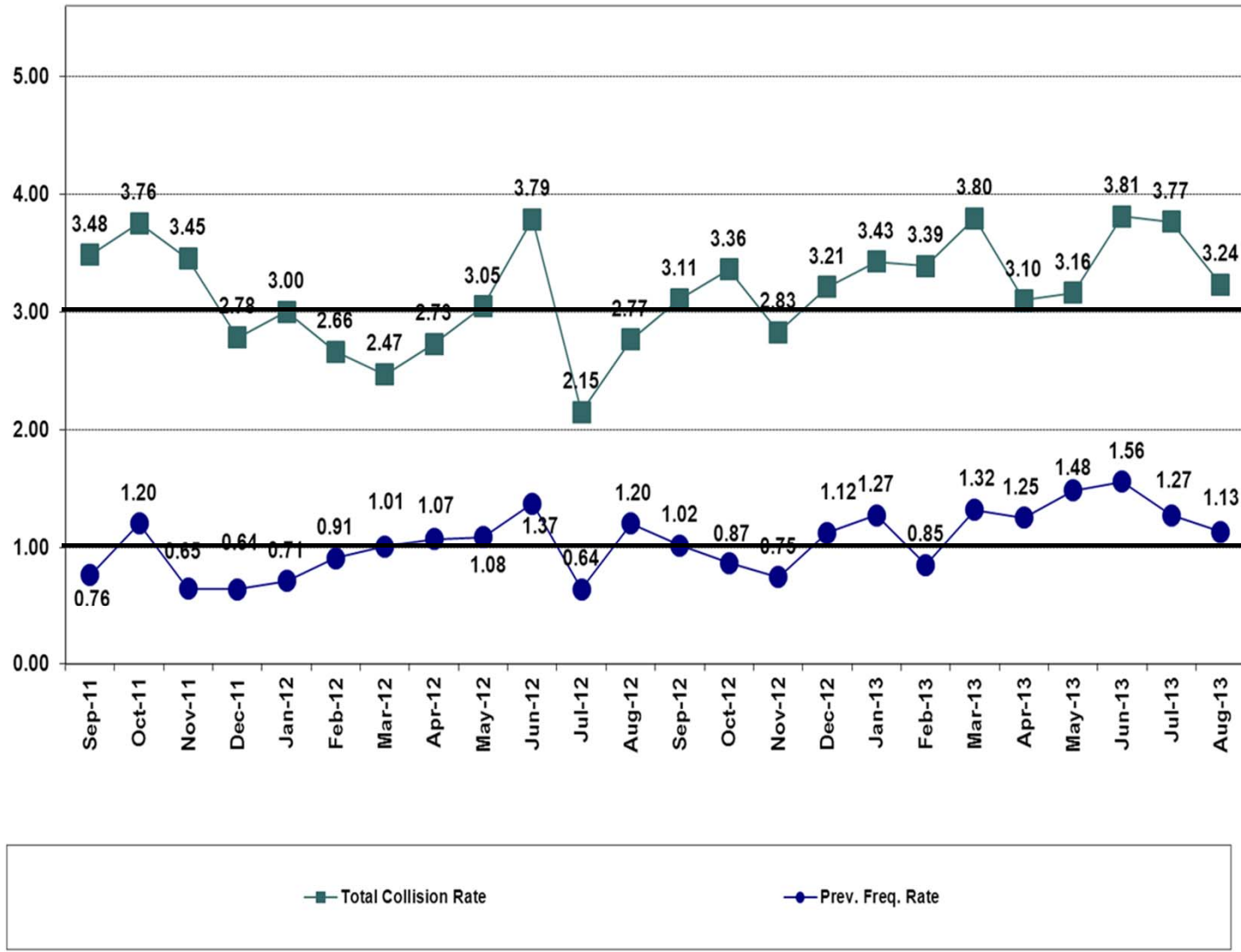


October 8, 2013





TOTAL AND PREVENTABLE COLLISION RATES YEAR 2011 THROUGH AUGUST 2013





Fixed Object Collisions

Action Plan Progress

District	Route	# of Fixed Object Collisions
Hayden	15	11
Hayden	HL	9

On Deck	Route	# of Fixed Object Collisions
Triskett	26	5
Hayden	14	5
Triskett	22	5



Fixed Object Collisions

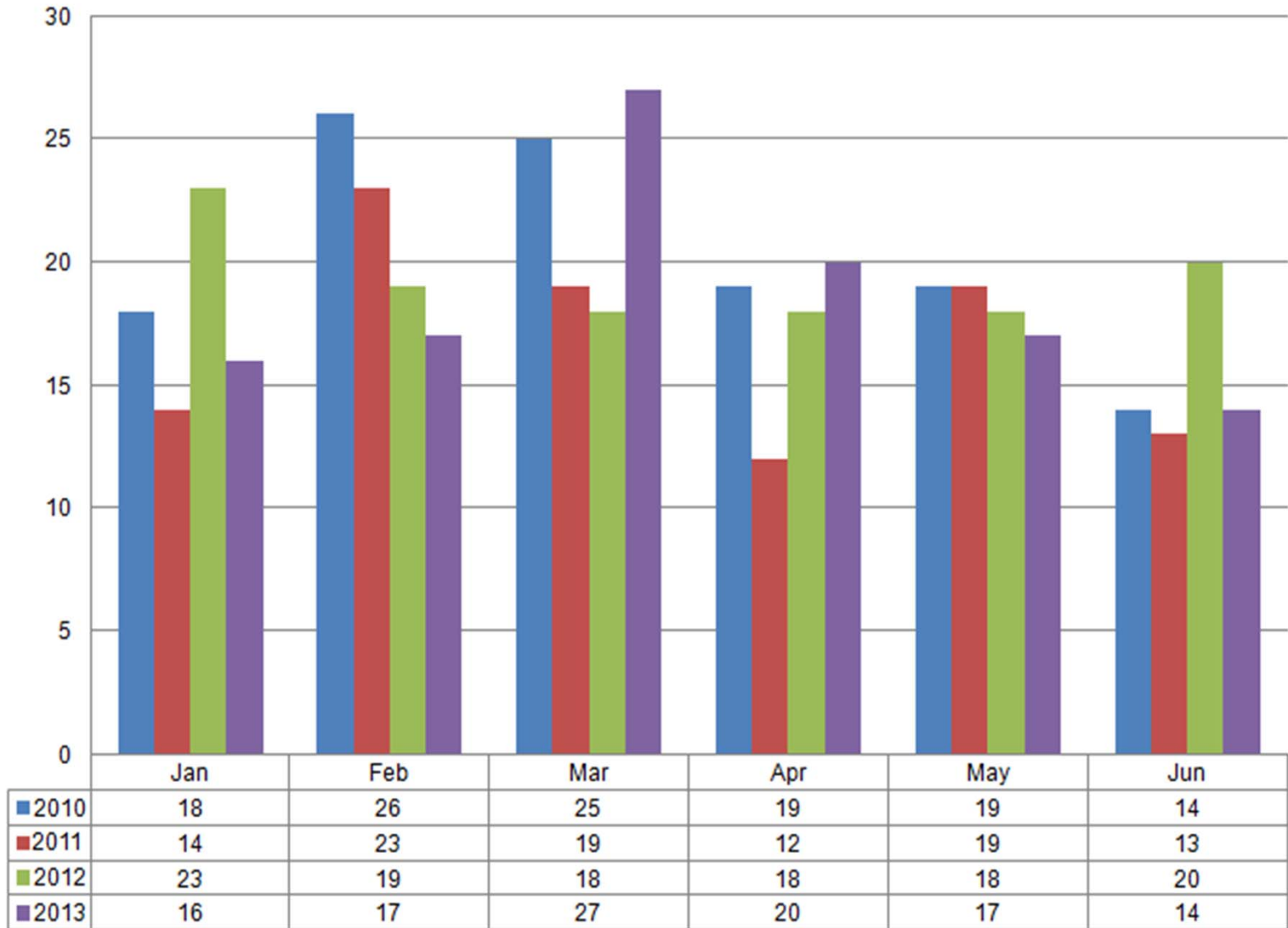
Action Plan

Driver Awareness

- Investigation of Each Fixed Object Collision
- Placards on Garage Hazards
- Painted ballards and perimeter curbs around district
- Placards on Hazard Objects
- Guidelines added to the HealthLine route for operators.



OV Passing on Left Total Collisions





OV Passing On The Left Action Plan

- Retraining for all Operators who continue to have accidents and collisions.
- Continue to monitor effectiveness of “Stop” signs and LED signals.
- Inform Operators of “Hot Spots”.
- Route Ride Along



Other Vehicle Rear-Ending RTA Vehicle Collisions by Month 2008-2013





Rear-End Collision Action Plan

- Visit the high incident stop locations by District to determine placement.
- Service Management Team assessing bus stops using Rear-End and Passing on the Left Safety Priority List and implementing PTMA recommendations.
- Evaluation of the Stop Sign pilot

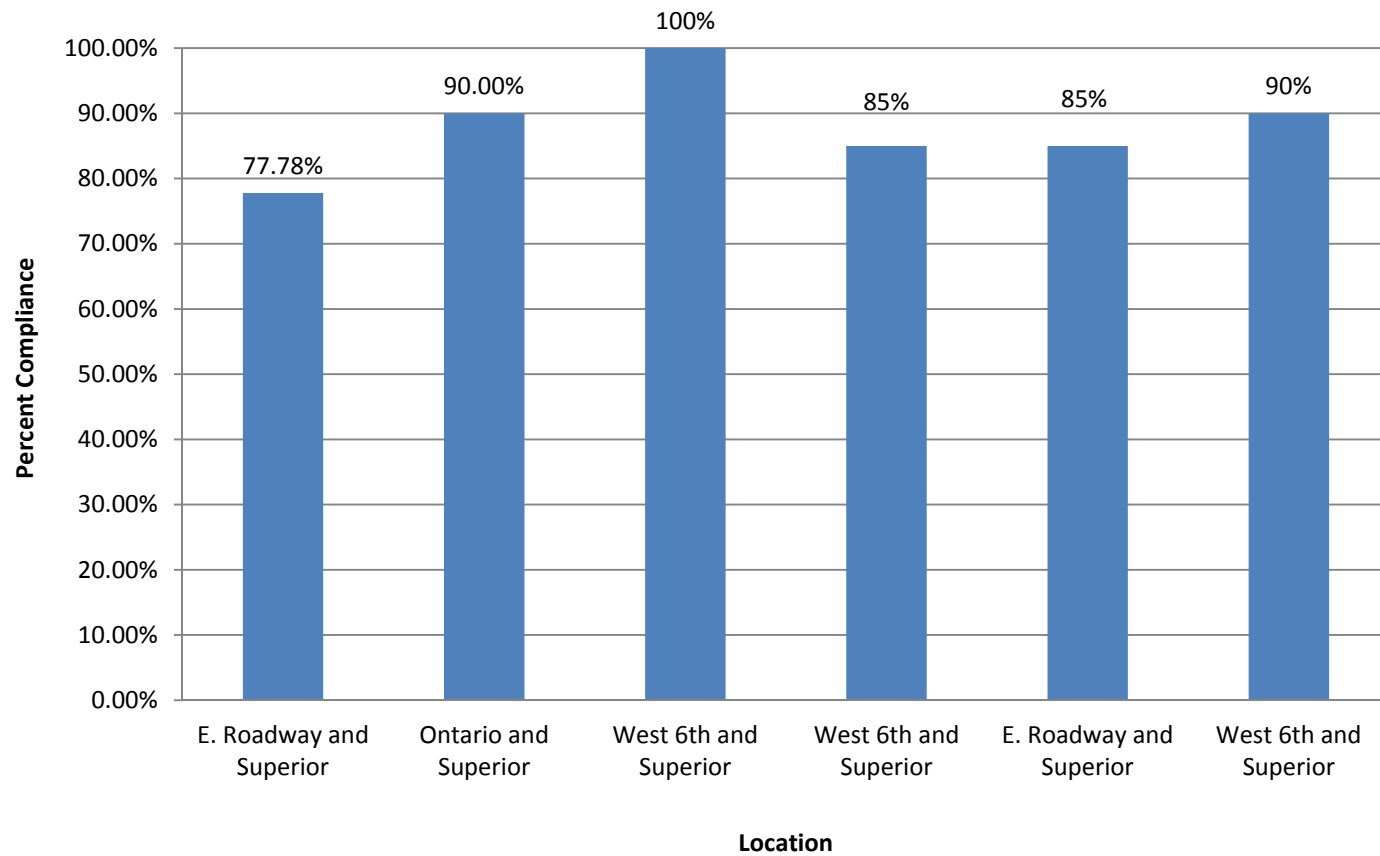


Safety Checks/Monitoring

- Elevator and Escalator
- Grade Crossing
- Look Back
- Rail Station Safety
- Safe Turn Alerts and Reflective Tape
- Seatbelt
- Speed
- Work Zone



Seatbelt Checks





Operator Speed Monitoring

HealthLine (Speed Limit 35 mph)

Total Coaches Audited	10
Coaches In Compliance	10
Coaches Over Posted Speed	0
Average Speed (mph)	30.70
Average Speed Over Posted (mph)	0.00
Compliance Percentage	100.00%



Work Zone Inspections

Moving Inspection Zone Checks for:

- Flaggers are 200 feet from worker
- Flaggers have radio, flags, horn



BOSCO

(Bus Oversight Safety Committee)

- Oversight Committee which will consist of key stakeholders in Bus Operations and Safety including:
 - Bus District Directors
 - Transportation/Equipment Managers
 - Service Quality
 - Fleet Management
 - Training
 - Transit Police
 - Engineering



Pre-Trip Inspection Form

- Sharing best-practices among Districts to improve processes
- New form for all Districts
- Safety will be closely monitoring