

Summary of Proposed Award A/E Services Tower City Station Track 7/8 Reconstruction

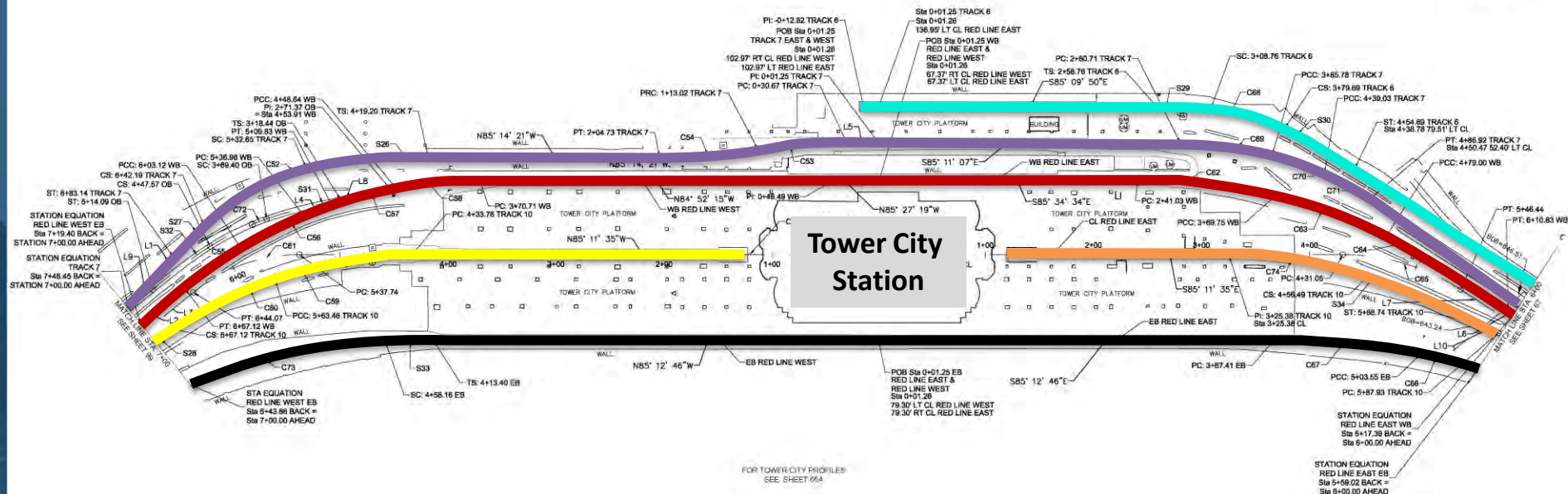
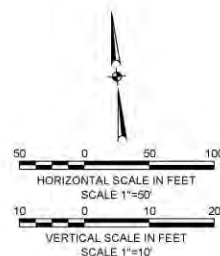
Presented to: Planning &
Development Committee

March 3, 2015

Tower City Station

- Terminal Tower completed 1928
- Blue/Green lines used from opening
- Red Line opened 1955
- Heart of GCRTA Rail System
- Almost 400 trains per day
- Most recent station reconstruction 1990
- Waterfront Line opened 1999

Tower City



Track 7

Track 8





Greater Cleveland Regional Transit Authority





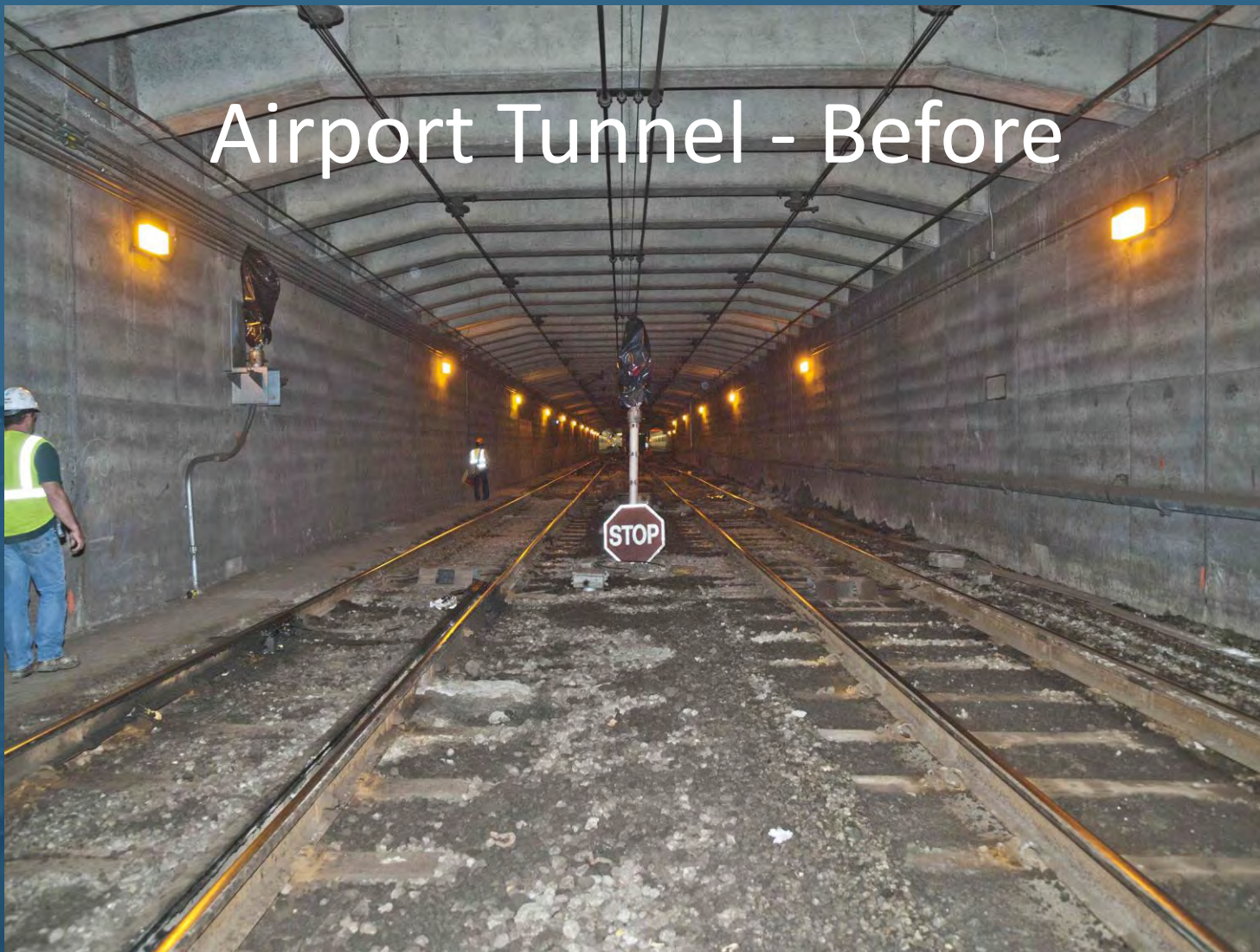


Greater Cleveland Regional Transit Authority





Airport Tunnel - Before



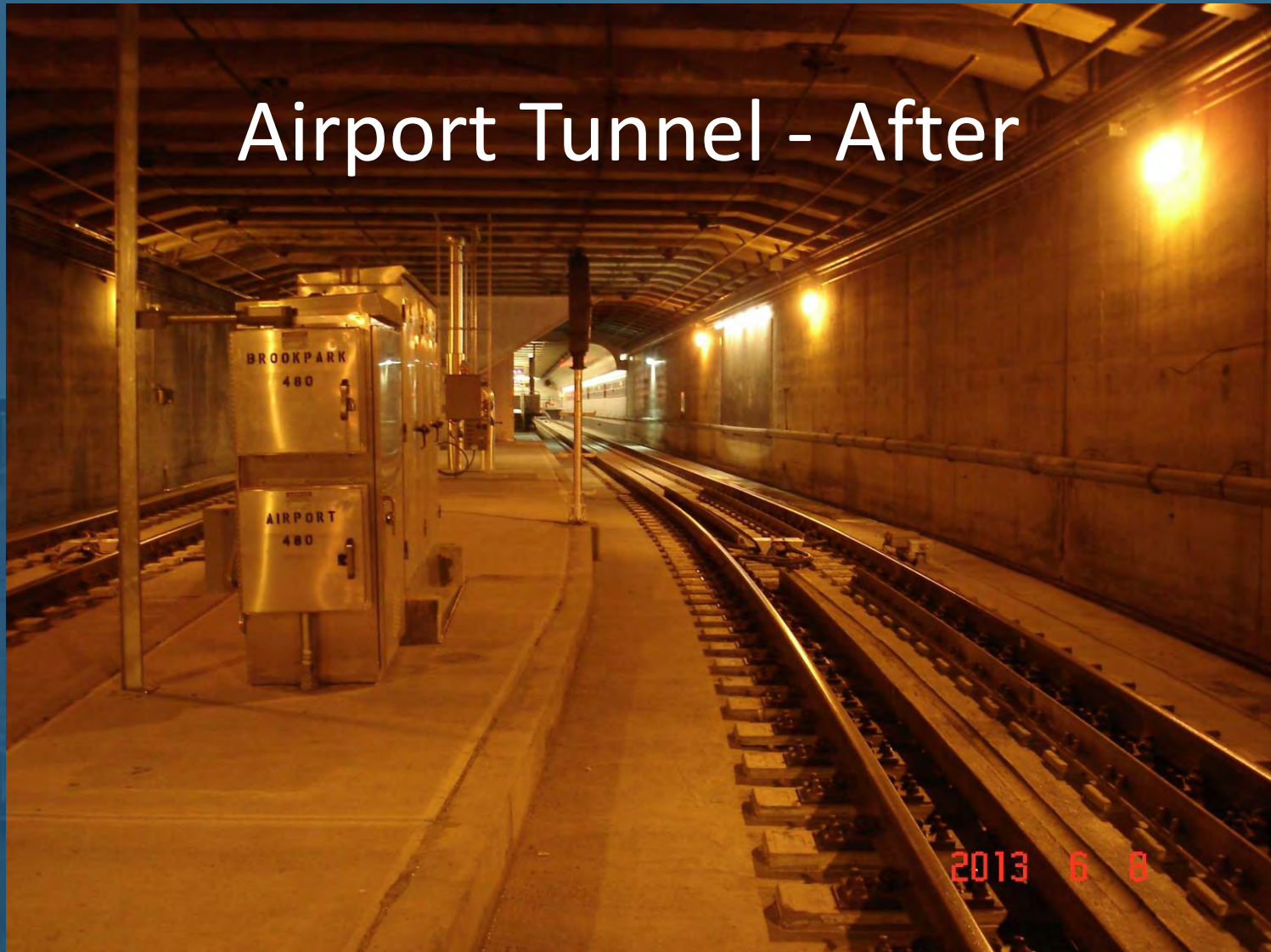
Airport Tunnel - Before



Airport Tunnel - After



Airport Tunnel - After



A/E Services for Tower City Station

- Field investigation
- Design development
- Produce complete construction document set
 - Reconstruct Track 7 – Auxiliary platform
 - Reconstruct Track 8 – Westbound track
- Provide bidding and construction support
- Construction budget of \$6,300,000

A/E Services for Tower City Station

- Scope of Services continued:
 - Meet ADA requirements
 - Rehabilitate track in Tower City Station
 - Structural concrete removal as necessary
 - Temporary way finding signage to Platform 7
 - Upgrade for Platform 7
 - Security and communications system: cameras, call boxes, real-time information signs and lighting

A/E Services for Tower City Station

- Tower City Catenary Sectionalization – design to be included in Track 7/8 project
 - Utilize four Eagle Avenue Substation feeders
 - Two feeders Eastbound, two Westbound
 - Four new isolation switches in Tower City
 - Four new overhead line breakers
 - Smoother power draw – lower energy costs

A/E Services for Tower City Station

- Schedule pending March Board Award
 - Track 7 Auxiliary Platform IFB August 2015
 - Track 7 work complete June 2016 before RNC
 - Track 8 reconstruction IFB November 2015
 - Track 8 reconstruction August 2016 after RNC
 - Track 8 reconstruction complete January 2017
- Track 10 & 13 reconstruction design 2016
 - Work could start in 2017 if funding is available

A/E Services for Tower City Station Procurement Overview

- RFP issued December 29, 2014
- Accessed on the GCRTA web site by twelve (12) interested parties
- One (1) firm proposed and interviewed
 - Some firms do not perform this type of work
 - Other firms are sub-consultants to proposer

A/E Services for Tower City Station

- Evaluation Panel Members:
 - Engineering
 - Operations
 - Transit Police
 - Procurement
 - Office of Business Development

A/E Services for Tower City Station

- Evaluation Criteria:

- Project Manager
- Assigned Staff
- Past Performance
- Project Approach
- Location of Majority of Work
- DBE Participation

A/E Services for Tower City Station

- Recommended Vendor:
 - TranSystems Corporation of Cleveland, Ohio
 - City Architecture
 - NTH
 - Osborn
 - Parsons Brinckerhoff
- 18% DBE Goal will be met by utilizing:
 - KS Associates, Inc.
 - Somat Engineering of Ohio, Inc.
 - Denise's Flagging and Construction Services

A/E Services for Tower City Station

- Firm Experience:
 - TranSystems Corporation of Ohio has successfully completed rail projects for GCRTA, CSX, Norfolk Southern, Chicago Transit Authority and SEPTA (Philadelphia) among others
 - Over forty-nine years experience
 - Experienced/qualified staff

A/E Services for Tower City Station

- Recommendation:
 - Design budget \$900,000
 - Negotiation based on internal estimate of \$833,000
 - Staff requests that the Planning & Development Committee recommend award to TranSystems Corporation of Ohio for the reconstruction of Track 7 Auxiliary Platform and Track 8 at Tower City Station. The base contract is not to exceed \$797,937.00.