

# Special Service Change & Winter 2015 Service Change

Presentation to  
RTA Board of Trustees  
Operations Committee  
October 13, 2015



# Special Service Change Nov. 8-21

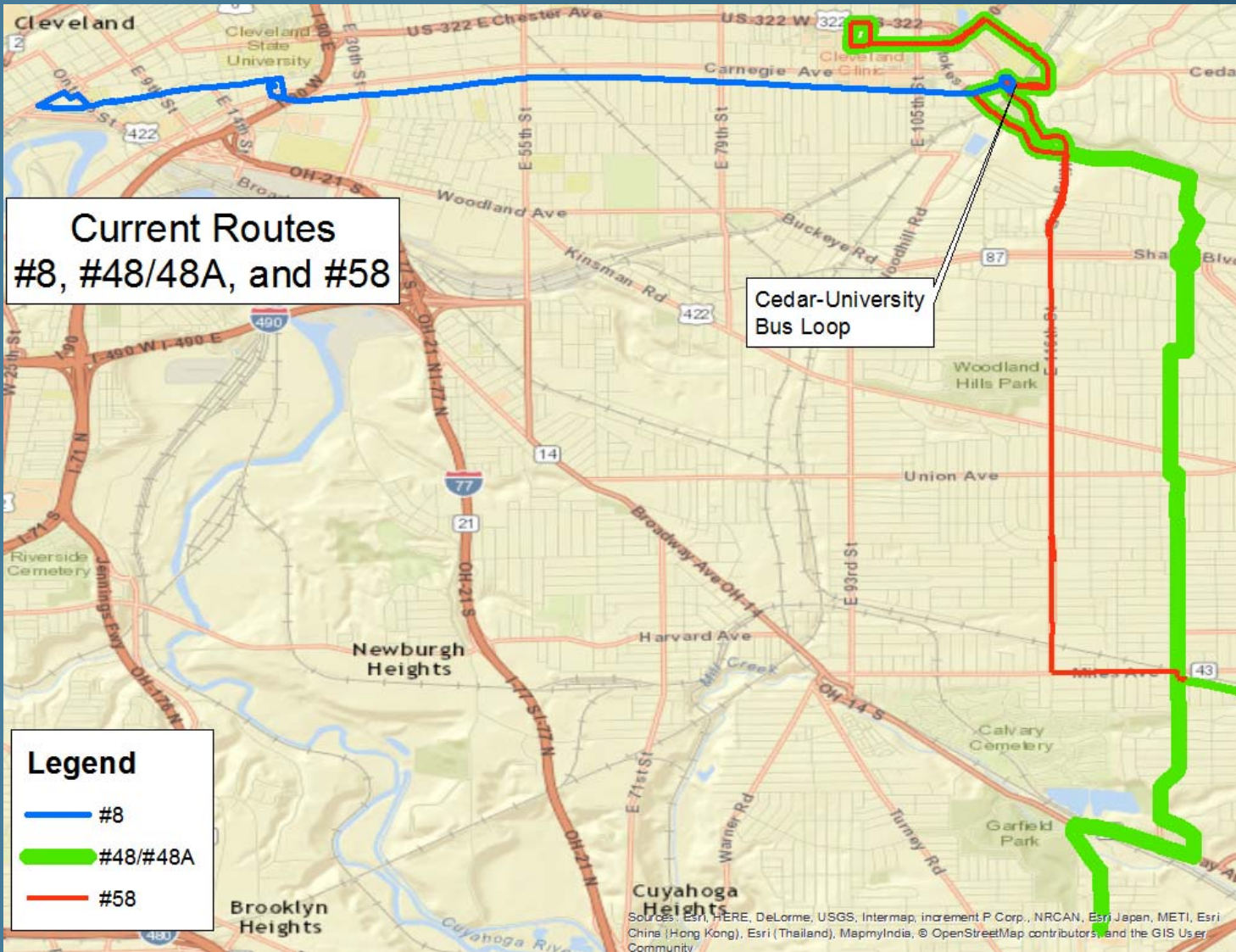
- Red Line Track Project
  - Trains will operate Windermere-West Blvd & Triskett-Airport
  - 66R buses will link West Blvd, W 117 & Triskett
- #25 Madison-Detroit extension to West Blvd Sta.

# Winter Service Change – Nov. 22, 2015

- Waterfront Line
  - Service extended to midnight
- Downtown Trolley Changes
  - Nine/Twelve – south terminal at E. 9-Chester
  - C-Line – possible Flats East Bank extension

# Winter Service Change – Nov. 22, 2015



- #9 Mayfield
  - Due to Little Italy Station, #9 will serve Cleveland Clinic instead of Cedar-University Station
- #8 Cedar
  - Business day extension to Miles-E. 131 via E. 116<sup>th</sup>
  - Replaces #58 south of Cedar-University Station
- #28 Euclid
  - Lakeshore-E. 222nd branch designated #28A

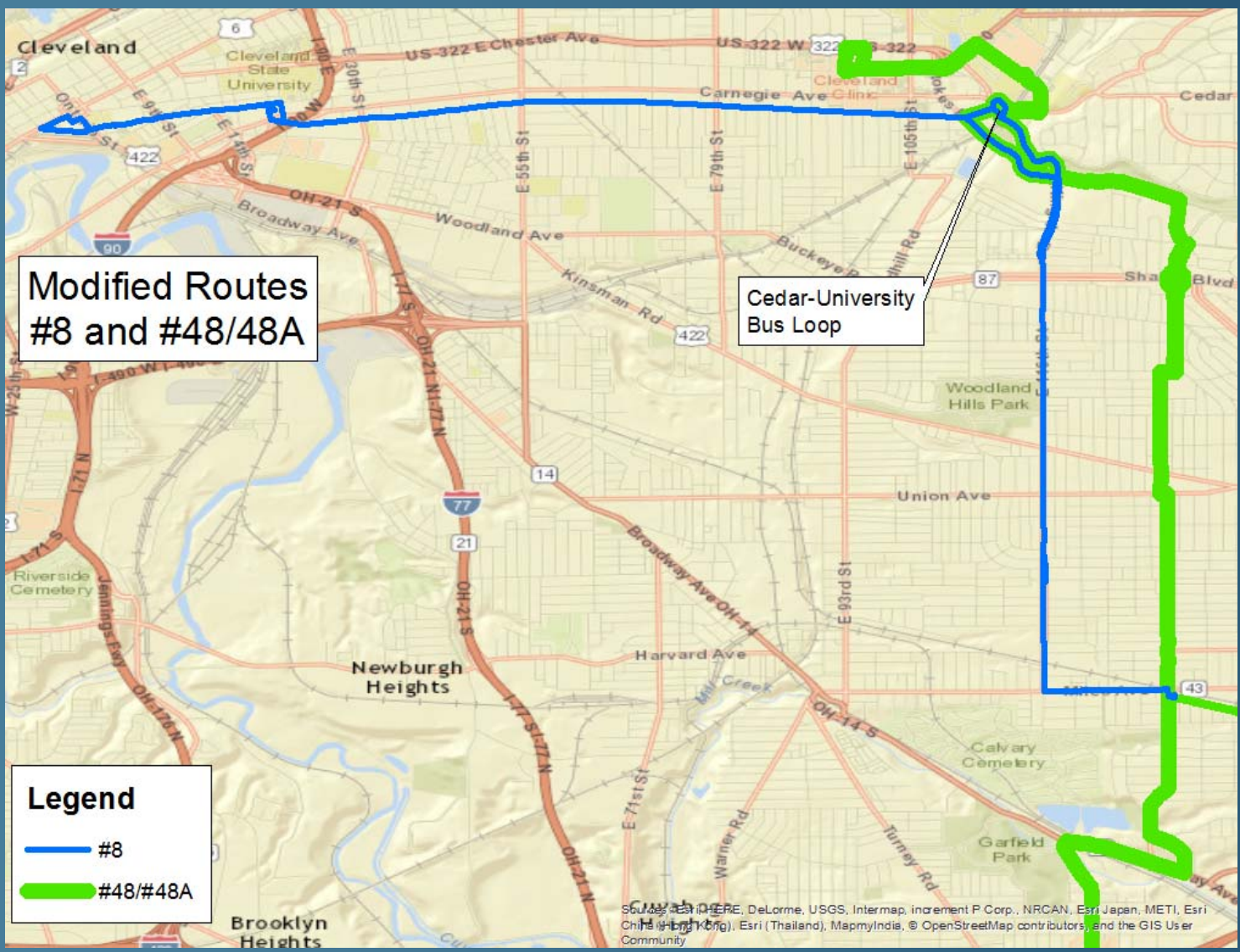


Modified Routes  
#8 and #48/48A

Cedar-University  
Bus Loop

**Legend**

-  #8
-  #48/#48A



Source: Esri, HERE, DeLorme, USGS, Intermap, increment P Corp., NRCAN, Esri Japan, METI, Esri China (Hong Kong), Esri (Thailand), MapmyIndia, © OpenStreetMap contributors, and the GIS User Community



# Winter Service Change – Nov. 22, 2015

- Added seasonal trips to #16, #32, #79A
- Added running time for reliability
  - #51 W. 25<sup>th</sup>-Pearl
  - #55 Cleveland State Line
  - #90F Broadway-Libby
  - C-Line
- Adjusted time points for reliability
  - #7, #9, #21, #26, #38, #45/45A, #51

# Questions?



Greater Cleveland Regional Transit Authority

