

# OPPORTUNITY CORRIDOR PHASE 2 E. 105<sup>th</sup> - Quincy Station Expansion



Presented to: Planning & Development Committee  
December 20, 2016



Greater Cleveland Regional Transit Authority



# Project Background

- E. 105<sup>th</sup> - Quincy Station constructed in 2004
  - Open air station with one car concrete platform
  - Single ADA access point from Quincy Ave.
  - Second entrance included in environmental mitigation to the proposed Opportunity Corridor
    - Provide second ADA access point from new E. 105<sup>th</sup> bridge
    - Extend platform to three car length



Greater Cleveland Regional Transit Authority



# Project Background

- ODOT/ GCRTA Interagency Agreement, Resolution No. 2015-6
  - Station expansion will be constructed as part of the \$35 million Opportunity Corridor Section 2 being administered by ODOT
  - Construction cost for station expansion is \$4 million
    - ODOT 80% up to \$3.2 million
    - GCRTA 20% up to \$800,000 plus all cost over \$4 million



Greater Cleveland Regional Transit Authority



# Stakeholders Feedback

- Meetings held with:
  - City of Cleveland East Region Design Review Committee
  - City of Cleveland Planning Department
  - Fairfax Renaissance Development Corporation
- General Comments Received
  - Station's interface with neighborhood and how it promotes ridership
  - Make station more Iconic
  - Create drop-off environment



Greater Cleveland Regional Transit Authority



# Stakeholders Feedback

- Recommendations Incorporated
  - Added height to elevator tower.
  - Added additional signage to station entrance
  - Widened station entrance
  - Introduced seating/waiting elements
  - Brighter color pallet at entrance canopy
  - Added textural elements to the elevator tower masonry
  - Artwork/ enhancements along bridge are included in ODOT Corridor wide program



Greater Cleveland Regional Transit Authority



# Stakeholders Feedback

- Recommendations Not Incorporated
  - Reconfigure station stairs – studied, but geometry does not work
  - Enclose station with larger headhouse – Cost prohibited due to \$4 million budget



Greater Cleveland Regional Transit Authority





# Station Area and Ridership

Red Line Ridership: Highest to lowest (Average Weekday 2015)

1. Tower City: 4,990
2. Stokes-Windermere : 1,710
3. West Park: 1,443
4. West Blvd.-Cudell: 1,428
5. W. 25<sup>th</sup>-Ohio City: 1,162
6. Brookpark: 1,137
7. W. 117<sup>th</sup>-Madison: 1,130
8. Puritas: 1,095
9. Cedar-University: 1,066
10. W. 65<sup>th</sup>-Lorain: 777
11. Triskett: 707
12. Airport: 684
13. Superior: 616
14. E. 55<sup>th</sup>: 588
15. Little Italy-  
University Circle: 566
16. **E. 105<sup>th</sup>-Quincy: 364**
17. E. 79<sup>th</sup> St.: 219
18. E. 34<sup>th</sup>: 113



Greater Cleveland Regional Transit Authority





Existing Station – Quincy Ave.



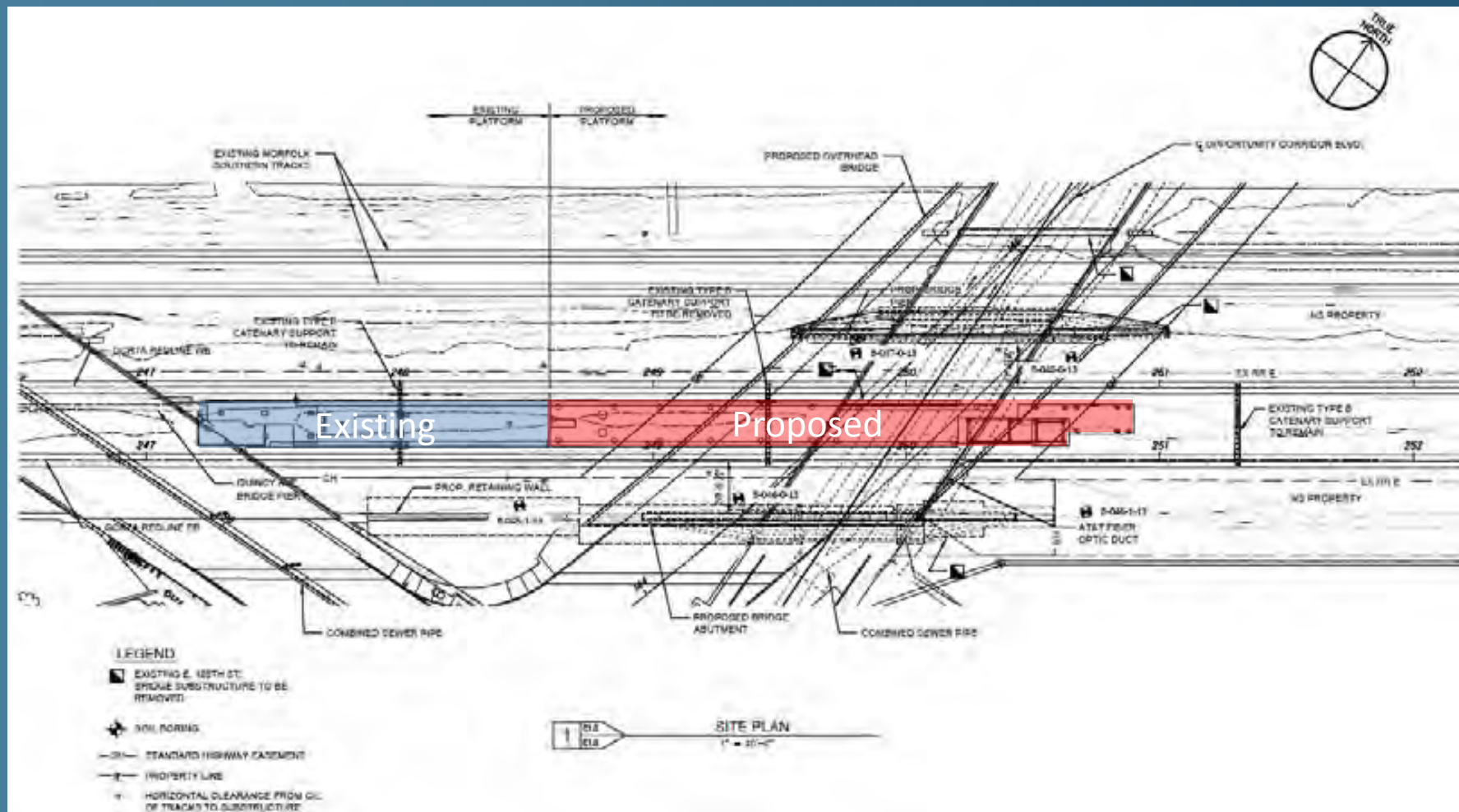
Existing Station – Platform Level



Greater Cleveland Regional Transit Authority







Site Plan

# Original Design



Greater Cleveland Regional Transit Authority





Greater Cleveland Regional Transit Authority







Greater Cleveland Regional Transit Authority





Greater Cleveland Regional Transit Authority







Greater Cleveland Regional Transit Authority





Greater Cleveland Regional Transit Authority







Greater Cleveland Regional Transit Authority





Greater Cleveland Regional Transit Authority



# Revised Design



Greater Cleveland Regional Transit Authority



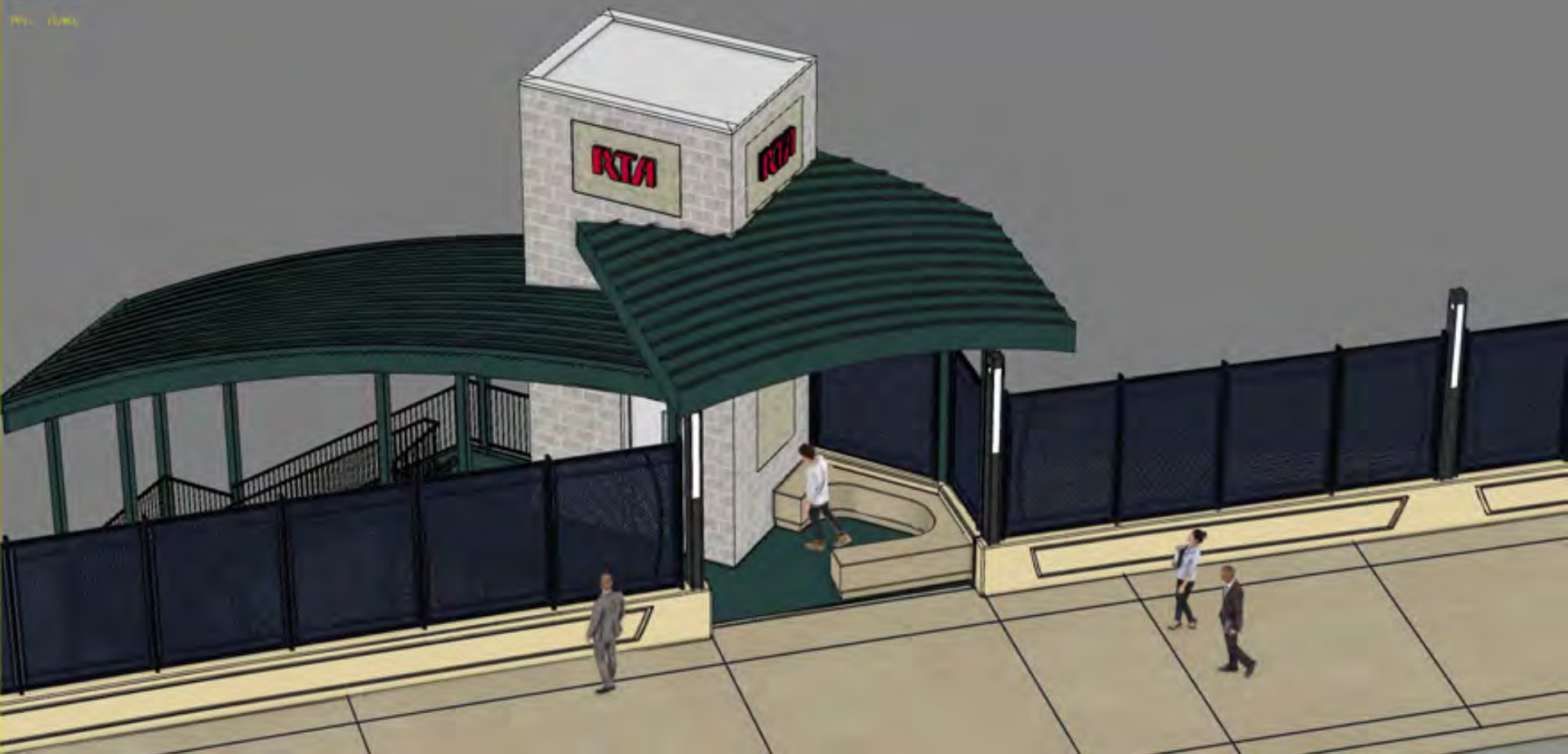




Greater Cleveland Regional Transit Authority



PAVE: 110.00000  
PAVE: 110.00000  
PAVE: 110.00000



Greater Cleveland Regional Transit Authority



FILE: 11031010  
REV: 10000000  
REV: 11/14/10



Greater Cleveland Regional Transit Authority





PAVE: 11/11/2011  
PMD: 11/11/2011  
PMD: 11/11/2011



Greater Cleveland Regional Transit Authority



Page: 110-307-001  
Title: 02060406  
Rev: 01/10



Greater Cleveland Regional Transit Authority







Greater Cleveland Regional Transit Authority



DATE: 11/14/2017  
TIME: 1:04:00 PM  
FILE: 00000

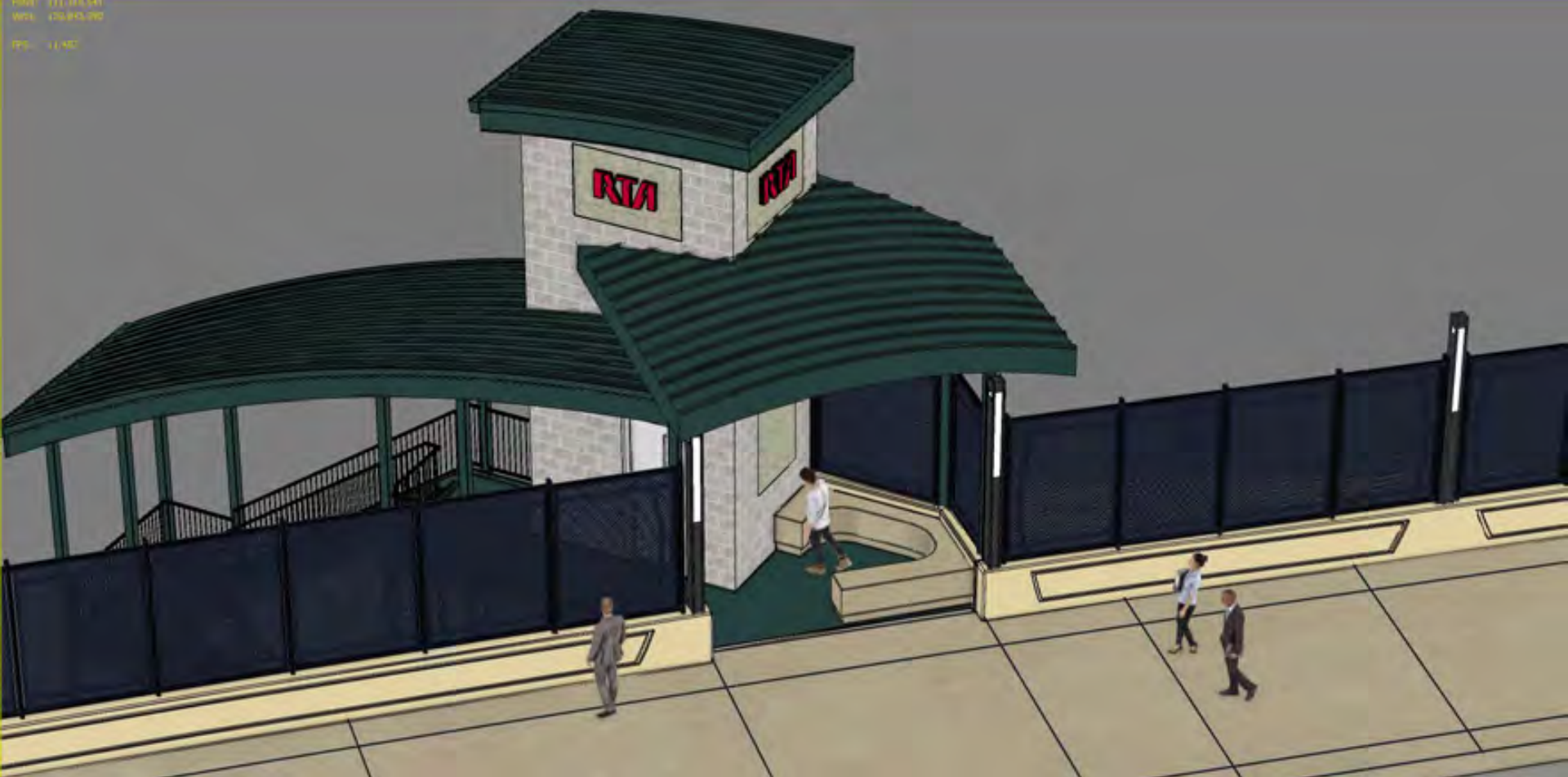


Greater Cleveland Regional Transit Authority





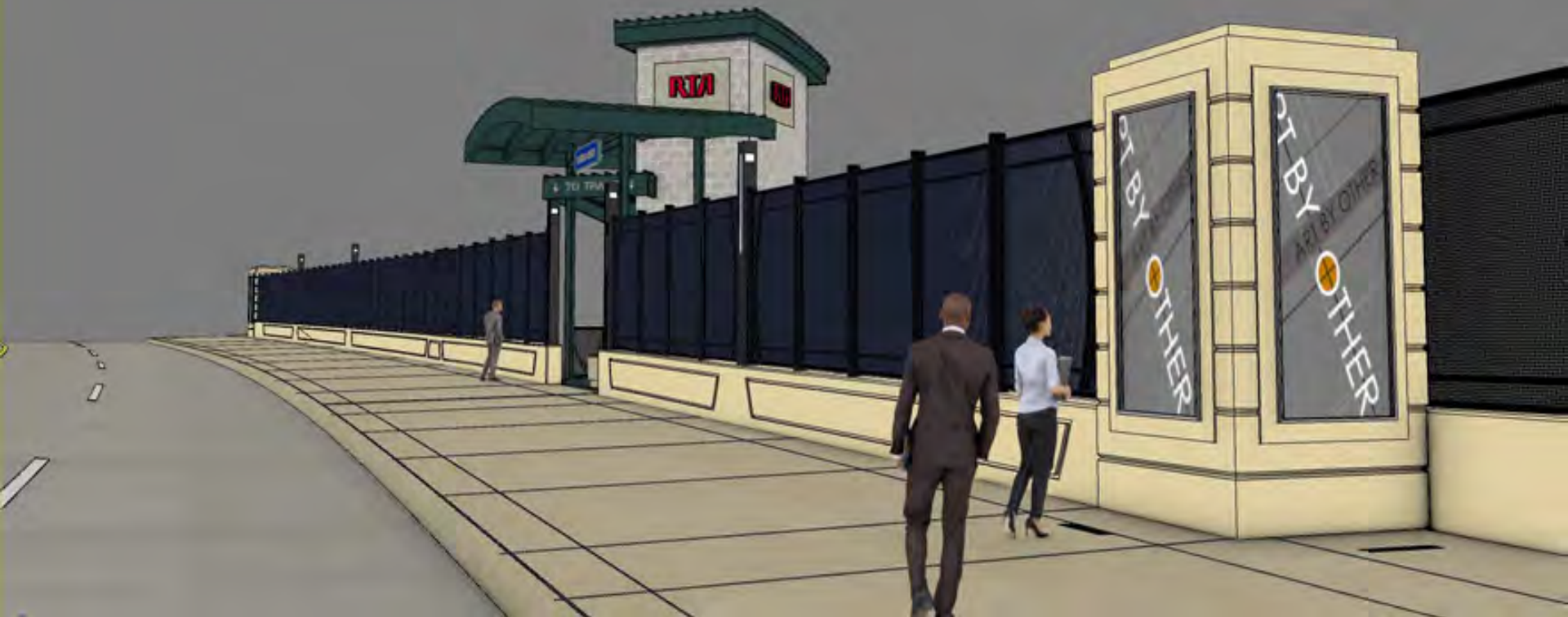
Phone: 216.393.5241  
Web: 216.843.2900  
Fax: 216.393.5242



Greater Cleveland Regional Transit Authority



PLAN  
SECTION  
ELEVATION  
DETAIL



Greater Cleveland Regional Transit Authority



PAV: 11/2/2018  
REV: 03/20/2020  
REV: 02/28/20



Greater Cleveland Regional Transit Authority



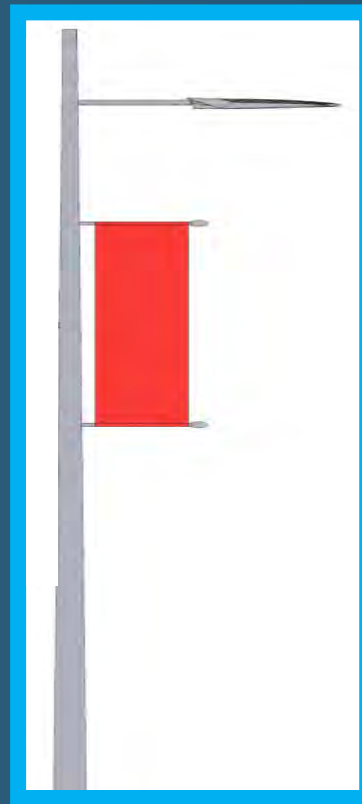
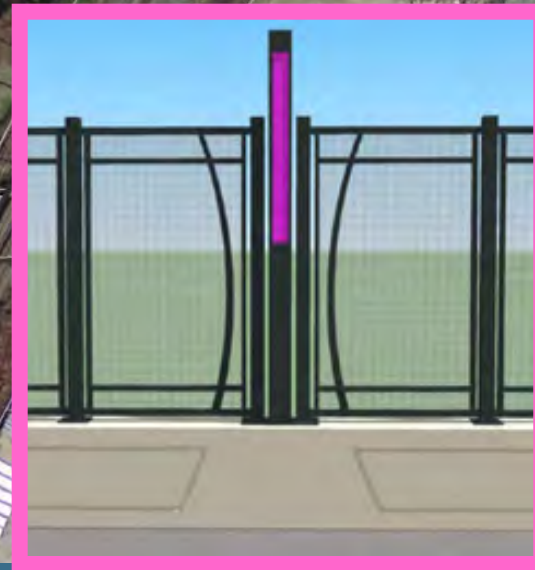




Greater Cleveland Regional Transit Authority



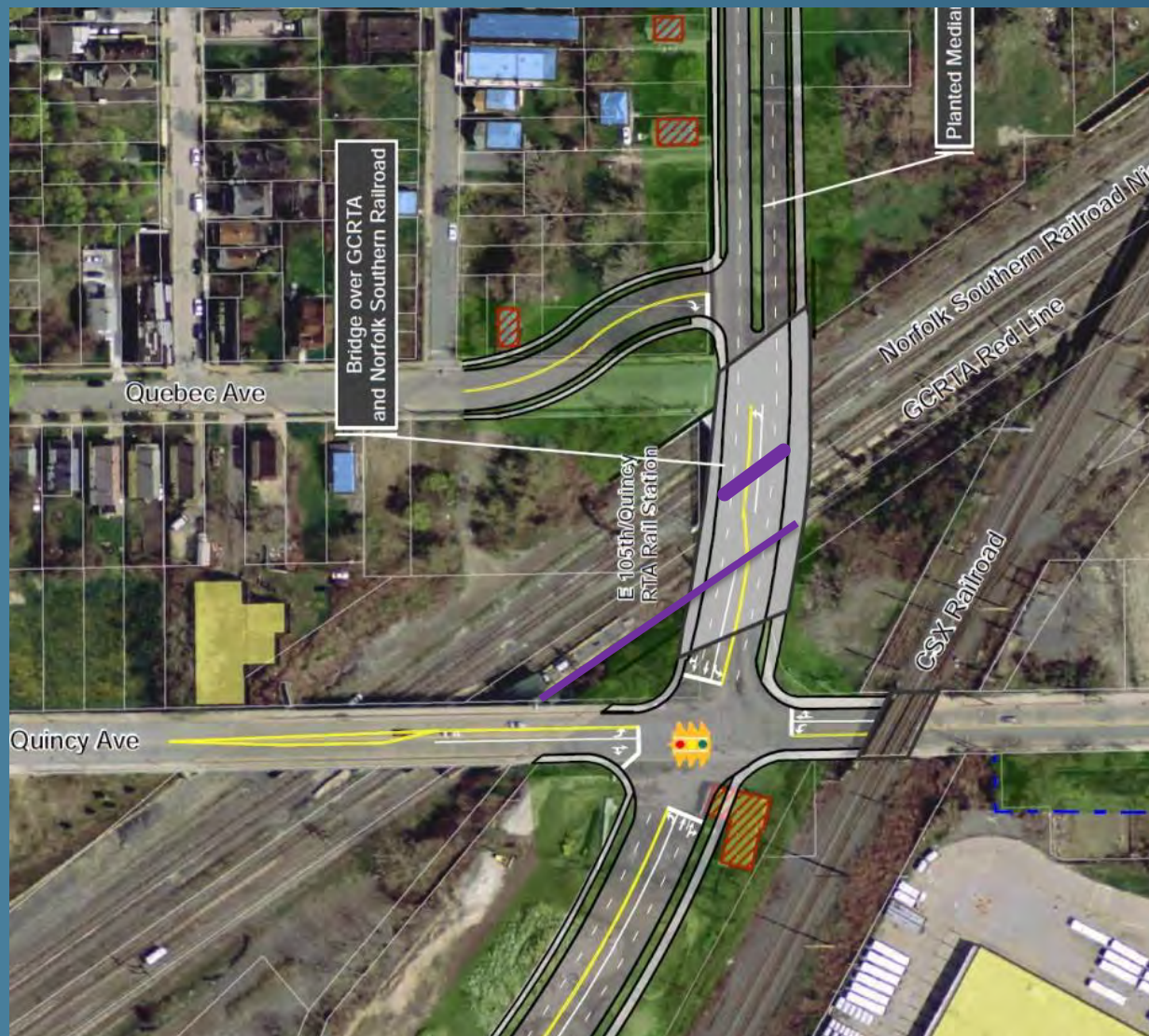




Greater Cleveland Regional Transit Authority







Greater Cleveland Regional Transit Authority





# Questions / Comments



Greater Cleveland Regional Transit Authority

