

# Summary of Proposed Award Rail Signal System Evaluation

Presented to: Planning &  
Development Committee

October 3, 2017

# Rail Signal System Evaluation

- Field investigation of rail signal system conditions and cost estimates to rehabilitate as well as replacement alternatives.
- Part of Asset Management Program.
- Will provide SOGR information for FTA, ODOT and NOACA.
- Grant funded by FTA and ODOT.

# RTA RAPID TRANSIT MAP



# Rail Signal System Evaluation

- Line Segments
  - Red Line West - Tower City to Airport
  - Red Line East - E. 79th to Windermere
  - Joint Territories - Tower City to E. 79th
  - Trunk Line (Blue, Green) - E. 79th to Shaker Square
  - Blue Line
  - Green Line
  - Tower City, Waterfront Line

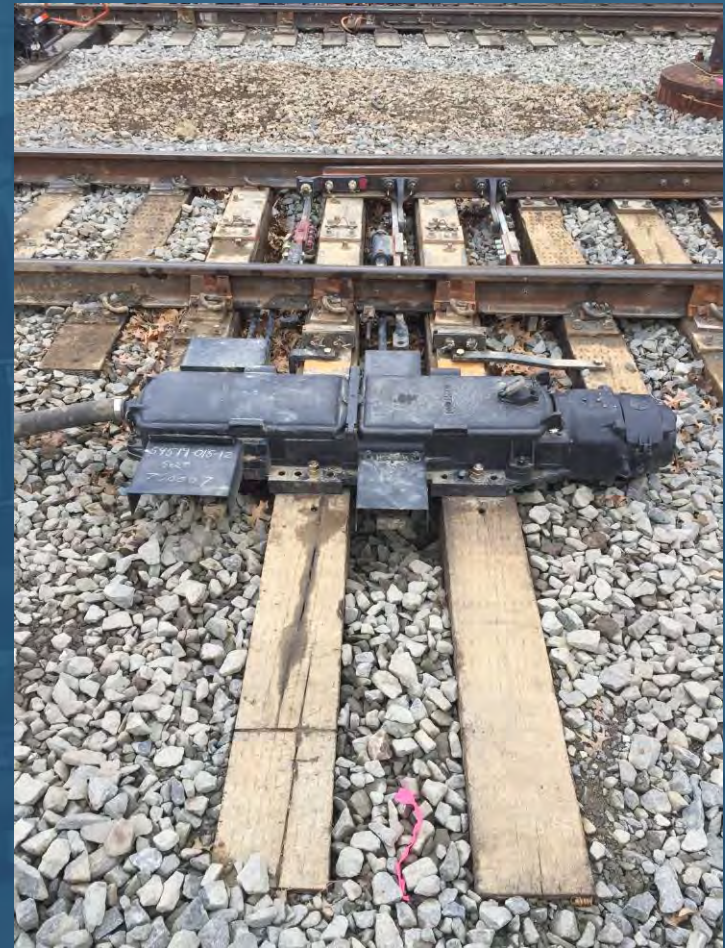
# Rail Signal System Evaluation

- Complete rail signal system field inspection
  - Signals
  - Relays, Vital processors
  - Cabling
  - Switch Machines
  - Impedance Bonds

# Rail Signal System Evaluation



# Rail Signal System Evaluation



# Rail Signal System Evaluation





# Rail Signal System Evaluation



# Rail Signal System Evaluation

- Evaluate Consolidated Train Dispatch System (CTDS)
  - At Rail Division Headquarters Building
  - At ICC in the Main Office Building

# Rail Signal System Evaluation

- Rate elements and overall systems on 1-5 scale, with 1 being absent or destroyed and 5 brand-new condition.
- Review trouble call and maintenance records.
- Utilize existing Ultramain records for database.

# Rail Signal System Evaluation

- Schedule/Deliverables:
  - Submit system condition evaluation and priorities report 120 days after NTP.
  - Submit estimates 150 days after NTP.
    - Work to attain “State of Good Repair”
    - System replacement alternatives by rail line
  - Final reports 210 days after NTP.

# Rail Signal System Evaluation

- RFP issued July 3, 2017
- Accessed on the GCRTA web site by seventeen (17) interested parties, including potential sub-consultants
- Four (4) firms proposed
- Four (4) firms were interviewed

# Rail Signal System Evaluation

- Evaluation Panel Members:
  - Engineering & Project Development
  - Safety Department
  - Rail
  - Procurement
  - Office of Business Development

# Rail Signal System Evaluation

- Evaluation Criteria:
  - Project Manager
  - Assigned Staff
  - Past Performance
  - Project Approach
  - Location of the Majority of the Work
  - DBE Participation

# Rail Signal System Evaluation

- Recommended Vendor:
  - Mott MacDonald, LLC, Cleveland, Ohio office
  - 9% DBE Goal will be met by utilizing:
    - Denise's Flagging & Construction Services, Inc.



# Rail Signal System Evaluation

- Firm Experience:
  - Mott MacDonald, LLC has successfully completed projects for WMATA, GCRTA, Port Authority of Allegheny County, among others
  - Established in 1902 and supported by more than 2,300 employees in North America and 16,000 employees worldwide
  - Experienced/qualified staff

# Rail Signal System Evaluation

- Recommendation:
  - Staff requests that the Planning & Development Committee recommend to the Board of Trustees award to Mott MacDonald, LLC for the Rail Signal System Evaluation. The base contract is not to exceed \$378,574.75