

Greater Cleveland Regional Transit Authority

Heavy Rail Vehicle Truck Rebuild Services

Presented to: Organizational, Services & Performance
Monitoring Committee

October 2, 2018

Greater Cleveland Regional Transit Authority



Bottom Line Up Front

A Heavy Rail Vehicle (HRV) Truck Rebuild Services Contract is needed to return the fleet to full service strength

HRV Truck

A Truck is the chassis or framework-like structure underneath a train to which wheel axles are attached through bearings



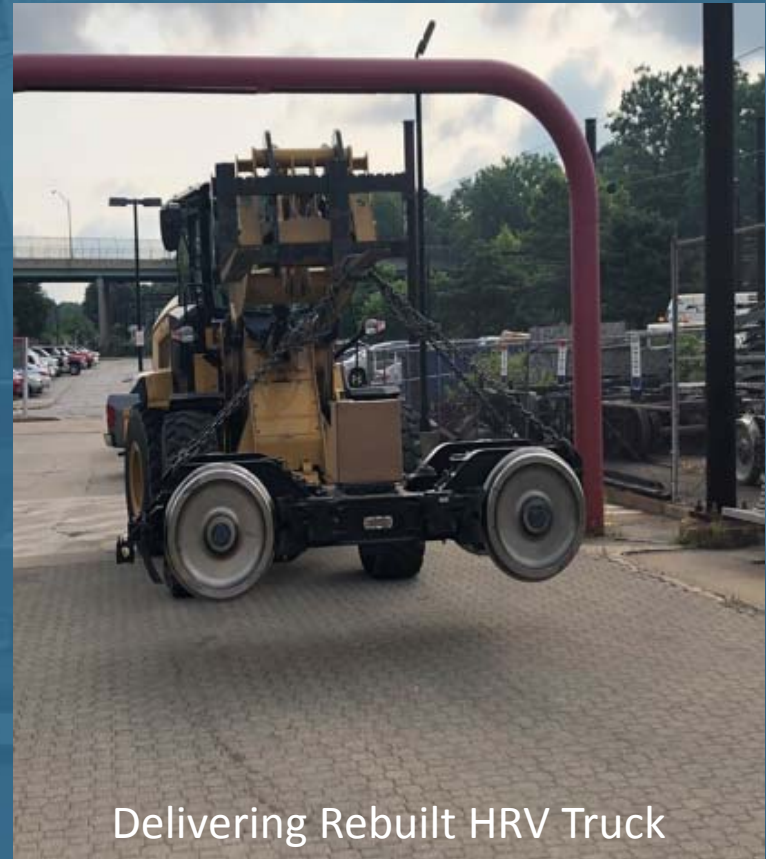
Impact of Wheel Replacements

- Total HRVs: 40
- HRVs needing to be re-wheeled: 16
- HRV monthly re-wheel rate: ~2.2
- HRVs removed monthly from service: ~4.0

Current re-wheel efforts cannot keep pace with attrition rate

HRV Wheel Replacement Strategy

- Created Second Shift
- Staffing Mechanic Positions
- Scheduling Overtime
- Process Improvements
- Truck Service Contract



Delivering Rebuilt HRV Truck

Results of Contract Support

- 8 Trucks already have been sent out under previous contract
- Result: 5 HRVs re-wheeled in four weeks – more than doubling the in-house production rate
- New contract will result in ~32 HRVs in service by second quarter of 2019

HRV Truck Rebuild Services

- Invitation for Bid issued July 23, 2018
- IFB downloaded by 23 interested parties
- 4 responsive and responsible bids received on September 6, 2018
- 0% DBE Goal established due to the lack of certified DBE firms

HRV Truck Rebuild Services

Bid Summary:

Vendor	Quantity	Unit Cost <u>Per Truck</u>	Extended <u>Total Cost</u>
UTCRA, LLC	26	\$10,214.39	\$265,574.14
ORX	26	\$12,866.00	\$334,516.00
TTA, Systems, LLC	26	\$16,568.03	\$430,768.78
GMI, LLC	26	\$21,900.00	\$569,400.00

HRV Truck Rebuild Services

Recommendation:

Staff requests that the Organizational, Services & Performance Monitoring Committee recommend to the Board of Trustees the award of a contract to UTCRAS, LLC to provide HRV Truck Rebuild Services in an amount not to exceed \$265,574.14

Questions?



Greater Cleveland Regional Transit Authority

